

TASMANIAN STATISTICAL INDICATORS

EMBARGO: 11:30AM (CANBERRA TIME) MON 10 DEC 2001

CONTENTS

	<i>page</i>
Notes	2
Main features	3
List of tables	8
SUBJECT AREAS	
1 Population and demography	9
2 Labour force	10
3 Wages and prices	18
4 Production	24
5 Primary industry	25
6 Building	29
7 Finance	30
8 Tourism	32
9 Transport	34
10 Retail trade	35
11 Overseas trade	36
12 Australia and State comparisons	38
13 Tasmanian Statistical Divisions comparisons	40
ADDITIONAL INFORMATION	
Map: Tasmanian Statistical Divisions	42

- For further information about these and related statistics, contact the National Information and Referral Service on 1300 135 070 or Mary Eagle on Hobart (03) 6222 5812.

NOTES

FORTHCOMING ISSUES

<i>ISSUE</i>	<i>RELEASE DATE</i>
January 2002	11 January 2002
February 2002	8 February 2002
March 2002	8 March 2002
April 2002	10 April 2002
May 2002	8 May 2002
June 2002	11 June 2002

INTRODUCTION

1 This publication contains latest figures for a comprehensive range of economic indicators. Statistics shown in this publication are the latest available at the date of preparation and may be subject to revision in subsequent issues. Reference should therefore always be made to the latest issue or to the statistical publication on the specific subject.

SEASONAL ADJUSTMENT AND TREND ESTIMATION

2 Seasonal adjustment is a means of removing the estimated effects of normal seasonal variation from the series so that the effects of other influences on the series can be more clearly recognised. Seasonal adjustment does not aim to remove the irregular or non-seasonal influences which may be present in any particular month. This means that month-to-month movements of the seasonally adjusted estimates may not be reliable indicators of trend behaviour.

3 The smoothing of seasonally adjusted series reduces the impact of the irregular components of the seasonally adjusted series and creates trend estimates. These trend estimates are derived by applying a 13-term Henderson-weighted moving average to all months except the last six. The last six monthly trend estimates are obtained by applying surrogates of the Henderson average to the seasonally adjusted series.

4 While this smoothing technique enables estimates to be produced for the latest month, it does result in revisions to the most recent months as additional observations become available. Generally, subsequent revisions become smaller and after three months have a negligible impact on the series.

5 ABS statistical series are being impacted by varying degrees as a result of The New Tax System (TNTS), introduced in Australia from 1 July 2000. TNTS includes the removal of Wholesale Sales Tax and the introduction of a Goods and Service Tax (GST), and as a result, a number of ABS data series will reflect significant and subsequent impacts. Further information can be found in *ABS Statistics and The New Tax System* (Cat. no. 1358.0).

SYMBOLS AND OTHER USAGES

n.a.	not available
n.p.	not available for separate publication (but included in totals where applicable)
n.y.a.	not yet available
. .	not applicable
—	nil or rounded to zero
p	preliminary — figure or series subject to revision
r	figure or series revised since previous issue

Stevan R. Matheson
Regional Director, Tasmania

MAIN FEATURES

THE LABOUR FORCE

Trend estimates There were an estimated 219,000 persons (based on *trend* estimates) in the labour force in October 2001 and an estimated 372,900 civilian Tasmanians aged 15 years or more, yielding a labour force participation rate of 58.7%, compared to 59.5% in October 2000. The Australian labour force participation rate for October 2001 was 63.7%, compared to 63.6% in October 2000 (see table 39 and *Labour Force, Australia, Preliminary* (Cat. no. 6202.0)).

For Tasmanian males, the *trend* estimate of the participation rate was 67.2% in October 2001, compared to 68.5% in October 2000. For Tasmanian females, the *trend* estimate of the participation rate was 50.7% in October 2001, compared to 50.9% in October 2000 (see table 3).

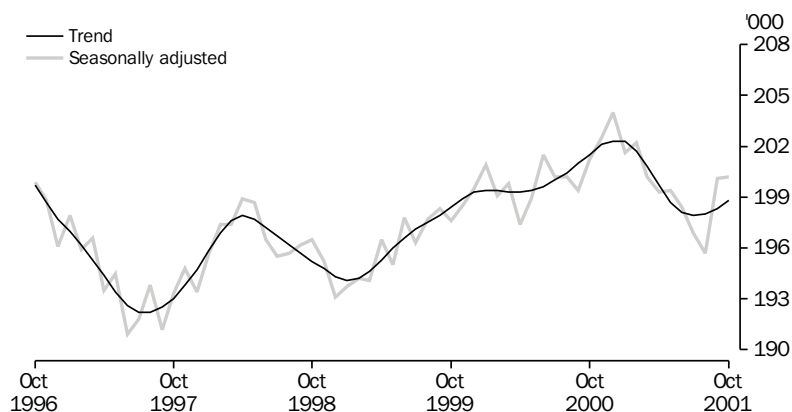
EMPLOYMENT

State comparisons

Trend estimates

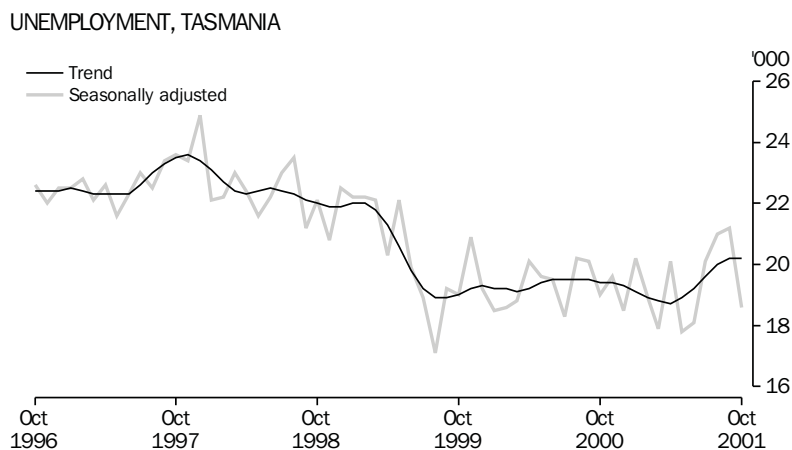
There was a decrease of 1.3% in Tasmania's employment over the 12 months to October 2001. Employment over the period increased in Queensland by 1.3%, Victoria, 0.8%; and New South Wales and Western Australia, 0.4%; and decreased in South Australia by 0.4%. The increase in Australia's employment over the same period was 0.6% (see table 39 and *Labour Force, Australia, Preliminary* (Cat. no. 6202.0)).

EMPLOYMENT, TASMANIA



UNEMPLOYMENT

Trend estimates The *trend* estimate of the number of unemployed persons in Tasmania for October 2001 was 20,200, compared to 19,400 in October 2000. The *trend* estimate of the unemployment rate of 9.2% in October 2001 compares to 8.8% in October 2000. The Australian *trend* estimate of the unemployment rate was 6.9% in October 2001, compared to 6.1% in October 2000 (see table 3 and 39, and *Labour Force, Australia, Preliminary* (Cat. no. 6202.0)).



BUILDING APPROVALS

Original terms There were 190 dwelling units approved during September 2001, including 145 new houses. The number of dwelling units approved during September 2001 was 27.5% above the August 2001 figure of 149, and 59.7% above the September 2000 figure of 119. The number of dwelling units approved in the 12 months to September 2001 (1,365) fell 23.5% from those approved in the 12 months to September 2000 (1,784).

At current prices, the value of total building was \$38.1m in September 2001, 17.6% above the August 2001 figure of \$32.4m and the same as in September 2000. Residential building contributed \$27.4m and non-residential building \$10.7m in September 2001 (see table 27 and *Building Approvals, Australia* (Cat. no. 8731.0)).

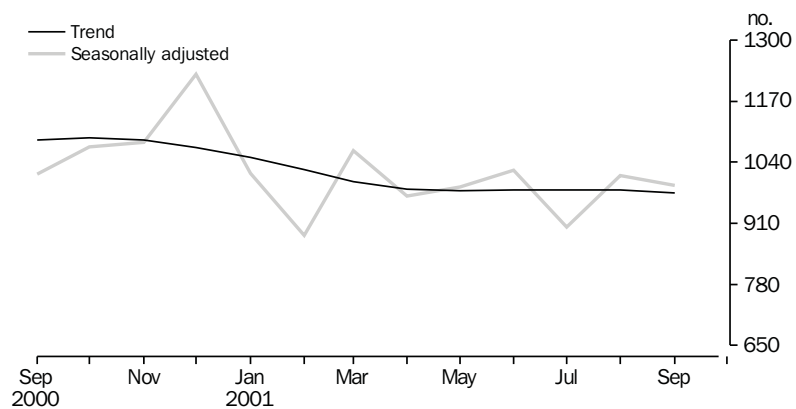
HOUSING FINANCE

Trend estimates The latest *trend* series for the number of housing finance commitments in Tasmania shows a decrease of 0.7% between August 2001 and September 2001. The *trend* series shows an overall decrease of 10.4% between September 2000 and September 2001. The national *trend* series shows an increase of 24.6% for the year September 2000 to September 2001, with an increase of 0.4% between August 2001 and September 2001.

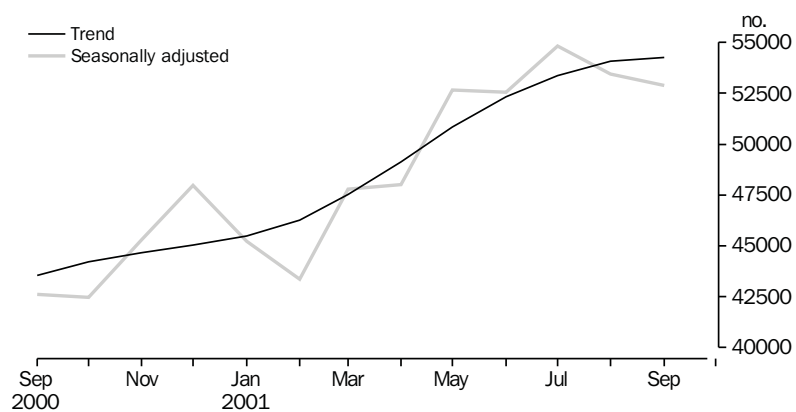
HOUSING FINANCE
Continued

Trend estimates The latest *trend* series for the total value of commitments for Tasmania shows no change between August 2001 and September 2001. The *trend* series from September 2000 to September 2001 showed an increase of 3.8%. The national *trend* series shows the value of commitments having increased by 1.0% between August 2001 and September 2001. An increase of 46.0% is shown for the 12 months from September 2000 to September 2001 (see table 28 and *Housing Finance for Owner Occupation, Australia* (Cat. no. 5609.0)).

HOUSING FINANCE, TASMANIA, Number of dwellings



HOUSING FINANCE, AUSTRALIA, Number of dwellings



NEW MOTOR VEHICLE REGISTRATIONS

Original terms There were 1,137 new motor vehicles (excluding motorcycles) registered in Tasmania during September 2001. This was 9.7% below the 1,259 registered in August 2001 and 26.4% below the September 2000 figure of 1,545. Of the new motor vehicles (excluding motorcycles) registered in September 2001, some 984 were passenger vehicles (1,042 in August 2001 and 1,313 in September 2000). There were 395 vehicles registered by vehicle rental businesses, compared to 186 in August 2001 and 454 in September 2000 (see table 34).

RETAIL

Trend estimates In *trend* terms, the estimate of retail turnover in Australia for September 2001 was \$13,689.0m, 8.3% above the figure recorded in September 2000 (\$12,644.4m). In *trend* terms, the estimate of retail turnover in Tasmania for September 2001 was \$287.5m, 4.0% above the figure recorded in September 2000 (\$276.4m).

The Tasmanian *trend* estimate has recorded a decline in each of the past five months. Household good retailing recorded a large fall, while there was strong growth in Recreational good retailing (see table 35 and *Retail Trade, Australia* (Cat. no. 8501.0)).

LIVESTOCK SLAUGHTERING

Trend estimates Monthly movements of *trend* estimates showed a decrease in the cattle and calves slaughtering series, which was down by 0.9%, and increases in the sheep and lambs and pigs slaughtering series, with sheep and lambs up by 4.5% and pigs up by 1.5%.

In September 2001, the *trend* estimate for the number of cattle and calves slaughtered was 16,900. This was down by 8.6% on the estimated number for September 2000 and down by 31.0% on the number for September 1999.

In September 2001, the *trend* estimate for the number of sheep and lambs slaughtered was 78,600. This was up by 2.0% on the estimate for September 2000 and down by 8.7% on the estimate for September 1999.

In September 2001, the *trend* estimate for the number of pigs slaughtered was 4,760. This was 2.1% less than for September 2000 and 24.3% less than for September 1999 (see table 21).

OVERSEAS TRADE

The value of Tasmania's exports for the month of September 2001 was \$166m, a decrease of 12.9% over the month of August. Australia's exports for September 2001 totalled \$10,644m, an increase of 1.2% on the previous month.

Tasmania's major export destinations for the month of September 2001 were Japan (\$35.6m), Hong Kong (\$20.0m) and United States of America (\$19.7m). Major commodity groups exported for the month of September 2001 were non-ferrous metals (\$63.3m), Fish, crustaceans and molluscs (\$13.7m) and Metallic ores and metal scrap (\$10.7m).

LIST OF TABLES

1	Population	9
2	Births, deaths and marriages	9
3	Labour force status — Seasonally adjusted and trend	10
4	Labour force status by region, males	11
5	Labour force status by region, females	12
6	Labour force status by region, persons	13
7	Teenage labour market	14
8	All employed persons by occupation	15
9	Wage and salary earners, sector and industry	16
10	Average hours worked	16
11	Job vacancies	17
12	Industrial disputes	17
13	Average weekly earnings of employees — Original and trend	18
14	Indexes of total hourly rates of pay (excluding bonuses)	19
15	Summary of annual movements in wages and prices	20
16	House price index numbers	20
17	Consumer price index, Hobart and eight capital cities combined	21
18	Price index of materials used in building other than house building, Hobart	22
19	Production of selected commodities	24
20	Livestock slaughtering — Original	25
21	Livestock slaughtering — Seasonally adjusted and trend	25
22	Meat production	26
23	Principal mineral concentrates produced	26
24	Sawmills and plywood mills, logs delivered and timber produced	27
25	Chipping and grinding of wood	28
26	Logs delivered for milling or chipping	28
27	Building approvals — Original	29
28	Secured housing commitments — Original, seasonally adjusted and trend	30
29	Private new capital expenditure by type of asset — Original	30
30	Banking statistics	31
31	Accommodation establishments	32
32	National Parks, person entries	33
33	Tracks in National Parks, walker registrations	33
34	Registrations of new motor vehicles	34
35	Turnover of retail establishments at current prices — Original and trend	35
36	Value of overseas trade — Tasmania and Australia	36
37	Merchandise exports by country — Original	36
38	Merchandise exports by commodity — Original	37
39	Major Statistical Indicators — Australia and State comparisons	38
40	Major Statistical Indicators — Tasmanian Statistical Divisions	40

1

POPULATION

	<i>Estimated resident population</i>	<i>Natural increase(a)</i>	<i>Net estimated migration gain</i>	<i>Total population growth</i>	<i>Annual growth rate(b)</i>
	'000	'000	'000	'000	%
1997-98	471.7	2.1	-3.9	-1.8	-0.38
1998-99	470.8	2.7	-3.6	-0.9	-0.19
1999-2000 r	470.3	2.1	-2.6	-0.5	-0.11
1999					
March qtr	471.1	0.7	-1.2	-0.5	-0.26
June qtr	470.8	0.7	-1.0	-0.3	-0.19
September qtr r	470.8	0.5	-0.5	—	-0.17
December qtr r	470.8	0.5	-0.5	—	-0.16
2000					
March qtr r	470.6	0.6	-0.8	-0.2	-0.10
June qtr r	470.3	0.5	-0.8	-0.3	-0.11
September qtr p	470.1	0.5	-0.7	-0.2	-0.16
December qtr p	470.1	0.4	-0.4	—	-0.15
2001					
March qtr p	470.3	0.8	-0.6	0.2	-0.07

(a) Excess of live births registered over deaths registered (based on usual State of residence).

(b) Percentage growth from same quarter in previous year.

Source: Australian Demographic Statistics (Cat. no. 3101.0).

2

BIRTHS, DEATHS AND MARRIAGES(a)

	<i>Births</i>		<i>Deaths</i>		<i>Infant mortality(b)</i>		<i>Marriages</i>	
	<i>no.</i>	<i>rate(c)</i>	<i>no.</i>	<i>rate(d)</i>	<i>no.</i>	<i>rate(e)</i>	<i>no.</i>	<i>rate(f)</i>
1997-98	5 870	1.76	3 766	6.6	38	6.5	2 782	5.9
1998-99	6 384	1.95	3 726	6.2	41	6.4	2 483	5.3
1999-2000 r	5 804	1.81	3 715	6.2	38	6.6	2 648	5.6
1999								
March qtr	1 545	..	865	..	9	5.8	858	..
June qtr	1 636	..	923	..	15	9.2	636	..
September qtr r	1 534	..	1 022	..	16	10.4	327	..
December qtr r	1 447	..	929	..	8	5.5	678	..
2000								
March qtr r	1 416	..	847	..	5	3.5	910	..
June qtr r	1 407	..	917	..	9	6.4	733	..
September qtr p	1 405	..	954	..	6	4.3	364	..
December qtr p	1 376	..	1 012	..	8	5.8	582	..
2001								
March qtr p	1 775	..	968	..	9	5.1	791	..

(a) Usual residents of Tasmania.

(b) Deaths of children under one year of age.

(c) Total fertility rate. The sum of age specific fertility rates (live births at each age of a mother per female population of that age). It represents the number of children a woman would bear during her lifetime if she experienced age-specific fertility rates at each age of her reproductive life.

(d) Standardised death rate. The overall death rate, per 1,000 persons, that would have prevailed in a standard population if it had experienced at each age the death rates of the population being studied. The standard population used in these calculations is all persons in the 1991 Australian population.

(e) Rate per 1,000 live births.

(f) Crude marriage rate is the number of marriages registered during the financial year, per 1,000 estimated resident population at 31 December of that year.

Source: Australian Demographic Statistics (Cat. no. 3101.0).

3

LABOUR FORCE STATUS(a)—SEASONALLY ADJUSTED AND TREND

	Seasonally adjusted series(b)				Trend series(b)			
	Employed	Unemployed	Unemploy- ment rate	Participation rate	Employed	Unemployed	Unemploy- ment rate	Participation rate
	'000	'000	%	%	'000	'000	%	%
MALES								
2000								
October	110.8	12.2	9.9	68.1	111.6	12.2	9.9	68.5
November	112.3	12.2	9.8	68.9	112.0	12.2	9.9	68.7
December	112.8	11.8	9.5	68.9	112.1	12.3	9.9	68.8
2001								
January	112.5	12.5	10.0	69.1	112.1	12.3	9.9	68.8
February	111.7	12.9	10.3	68.9	111.7	12.3	9.9	68.5
March	111.1	11.2	9.2	67.6	111.2	12.2	9.9	68.2
April	109.6	13.1	10.7	67.8	110.4	12.1	9.9	67.7
May	110.1	11.9	9.7	67.4	109.8	12.1	9.9	67.3
June	110.1	11.4	9.4	67.1	109.3	12.2	10.0	67.1
July	108.9	11.9	9.8	66.7	109.0	12.4	10.2	67.0
August	107.0	13.4	11.1	66.5	108.9	12.6	10.3	67.1
September	109.6	13.3	10.8	67.9	108.9	12.8	10.5	67.1
October	109.8	12.3	10.1	67.4	109.0	12.8	10.5	67.2
FEMALES								
2000								
October	90.4	6.8	7.0	51.0	89.9	7.2	7.5	50.9
November	90.3	7.3	7.5	51.1	90.1	7.2	7.4	50.9
December	91.2	6.6	6.8	51.2	90.2	7.0	7.2	50.9
2001								
January	89.2	7.8	8.0	50.7	90.2	6.8	7.0	50.8
February	90.5	6.0	6.3	50.5	90.0	6.7	6.9	50.6
March	89.1	6.7	7.0	50.1	89.6	6.6	6.8	50.3
April	89.8	7.0	7.2	50.6	89.2	6.6	6.9	50.1
May	89.4	6.0	6.3	49.8	88.9	6.8	7.1	50.0
June	88.3	6.7	7.0	49.6	88.8	7.1	7.4	50.1
July	87.9	8.2	8.6	50.2	88.9	7.3	7.6	50.2
August	88.7	7.7	8.0	50.3	89.1	7.4	7.7	50.4
September	90.5	7.8	8.0	51.3	89.5	7.4	7.7	50.6
October	90.4	6.3	6.5	50.4	89.8	7.4	7.6	50.7
PERSONS								
2000								
October	201.2	19.0	8.6	59.3	201.5	19.4	8.8	59.5
November	202.5	19.6	8.8	59.8	202.1	19.4	8.8	59.6
December	204.0	18.5	8.3	59.8	202.3	19.3	8.7	59.6
2001								
January	201.6	20.2	9.1	59.7	202.3	19.1	8.6	59.5
February	202.2	18.9	8.6	59.4	201.7	18.9	8.6	59.3
March	200.2	17.9	8.2	58.6	200.8	18.8	8.5	59.0
April	199.3	20.1	9.2	59.0	199.7	18.7	8.6	58.7
May	199.4	17.8	8.2	58.4	198.7	18.9	8.7	58.4
June	198.4	18.1	8.4	58.1	198.1	19.2	8.9	58.4
July	196.9	20.1	9.3	58.3	197.9	19.6	9.0	58.4
August	195.7	21.0	9.7	58.2	198.0	20.0	9.2	58.5
September	200.1	21.2	9.6	59.3	198.3	20.2	9.2	58.6
October	200.2	18.6	8.5	58.7	198.8	20.2	9.2	58.7

(a) For explanation of terms and concepts, refer to *Labour Force, Australia, Preliminary* (Cat. no. 6202.0). At April 2001, estimates for prior periods were revised because of some minor definitional changes.

(b) Seasonal factors are reviewed annually to take account of each additional year's data. The results of the review are used to compile revised seasonally adjusted and trend estimates each February. Trend estimates for the most recent months are also revised each month; see Notes on page 2.

Source: *Labour Force, Australia, Preliminary* (Cat. no. 6202.0).

4

LABOUR FORCE STATUS BY REGION—MALES(a)(b)

	<i>Total employed</i>	<i>Total unemployed</i>	<i>Unemployment rate</i>	<i>Participation rate</i>
	'000	'000	%	%
HOBART AND SOUTHERN STATISTICAL DIVISIONS				
1998				
October	52.5	5.8	9.9	67.1
2000				
October	50.5	6.4	11.2	65.1
2001				
August	49.8	7.3	12.8	65.1
September	51.5	7.2	12.3	67.0
October	51.0	6.0	10.6	65.9
NORTHERN STATISTICAL DIVISION				
1998				
October	31.6	4.5	12.4	70.6
2000				
October	35.6	2.9	7.6	72.9
2001				
August	33.1	3.2	8.9	68.8
September	34.1	3.6	9.7	69.4
October	33.5	3.2	8.7	68.5
MERSEY-LYELL STATISTICAL DIVISION				
1998				
October	24.6	3.9	13.7	67.2
2000				
October	23.9	3.0	11.1	66.3
2001				
August	22.6	3.4	12.9	64.3
September	23.8	2.5	9.6	67.3
October	24.7	2.9	10.4	67.1
TASMANIA				
1998				
October	108.7	14.1	11.5	68.1
2000				
October	109.9	12.3	10.1	67.6
2001				
August	105.6	13.9	11.7	66.0
September	109.4	13.4	10.9	67.8
October	109.2	12.1	9.9	66.9

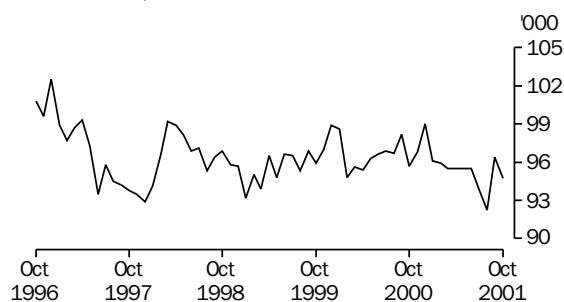
(a) For explanation of terms and concepts, refer to *Labour Force, Australia* (Cat. no. 6203.0).

(b) Data in this table are original series, i.e. they are not part of a seasonally adjusted or a trend series. Accordingly, care should be exercised when using these data.

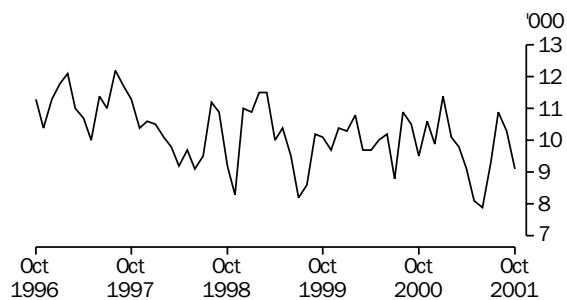
Source: *Labour Force, Selected Summary Tables, Australia* (Cat. no. 6291.0.40.001).

Hobart and Southern Statistical Divisions (see table 6)

EMPLOYMENT, PERSONS



UNEMPLOYMENT, PERSONS



5

LABOUR FORCE STATUS BY REGION—FEMALES(a)(b)

	Total employed	Total unemployed	Unemployment rate	Participation rate
	'000	'000	%	%
HOBART AND SOUTHERN STATISTICAL DIVISIONS				
1998				
October	44.3	3.5	7.2	51.7
2000				
October	45.1	3.1	6.4	52.1
2001				
August	42.4	3.6	7.8	49.2
September	45.0	3.1	6.4	51.5
October	43.8	3.1	6.6	50.2
NORTHERN STATISTICAL DIVISION				
1998				
October	24.4	3.2	11.5	51.4
2000				
October	26.2	2.1	7.6	50.9
2001				
August	26.9	2.5	8.4	52.5
September	27.0	2.3	7.9	52.2
October	27.2	1.6	5.6	51.6
MERSEY-LYELL STATISTICAL DIVISION				
1998				
October	17.7	2.0	10.2	45.5
2000				
October	17.9	2.7	13.0	48.3
2001				
August	17.8	2.0	10.1	46.9
September	18.8	2.6	12.3	50.8
October	18.9	1.9	9.3	49.0
TASMANIA				
1998				
October	86.5	8.6	9.1	50.2
2000				
October	89.2	7.9	8.1	50.9
2001				
August	87.1	8.1	8.5	49.7
September	90.8	8.0	8.1	51.6
October	89.9	6.7	6.9	50.4

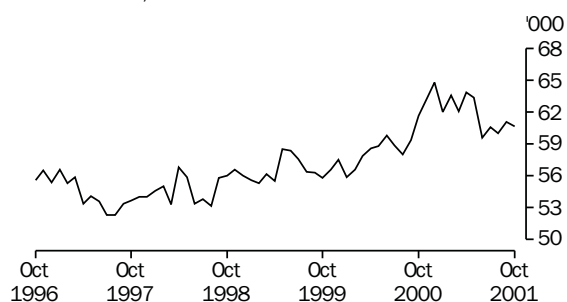
(a) For explanation of terms and concepts, refer to *Labour Force, Australia* (Cat. no. 6203.0).

(b) Data in this table are original series, i.e. they are not part of a seasonally adjusted or a trend series. Accordingly, care should be exercised when using these data.

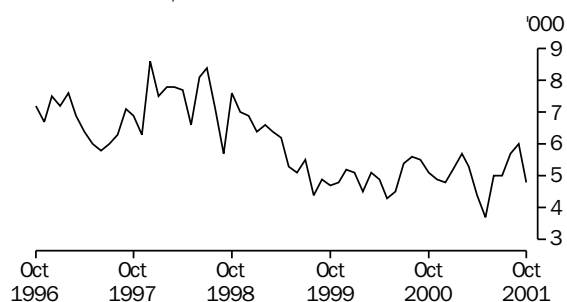
Source: *Labour Force, Selected Summary Tables, Australia* (Cat. no. 6291.0.40.001).

Northern Statistical Division (see table 6)

EMPLOYMENT, PERSONS



UNEMPLOYMENT, PERSONS



6

LABOUR FORCE STATUS BY REGION—PERSONS(a)(b)

	<i>Total employed</i>	<i>Total unemployed</i>	<i>Unemployment rate</i>	<i>Participation rate</i>
	'000	'000	%	%
HOBART AND SOUTHERN STATISTICAL DIVISIONS				
1998				
October	96.9	9.2	8.7	59.2
2000				
October	95.7	9.5	9.0	58.4
2001				
August	92.2	10.9	10.6	56.9
September	96.4	10.3	9.6	59.0
October	94.7	9.1	8.8	57.7
NORTHERN STATISTICAL DIVISION				
1998				
October	56.0	7.6	12.0	60.8
2000				
October	61.7	5.1	7.6	61.6
2001				
August	60.0	5.7	8.7	60.4
September	61.1	6.0	8.9	60.7
October	60.7	4.8	7.3	59.9
MERSEY-LYELL STATISTICAL DIVISION				
1998				
October	42.3	5.9	12.2	56.2
2000				
October	41.8	5.7	11.9	57.1
2001				
August	40.4	5.4	11.7	55.5
September	42.7	5.2	10.8	58.7
October	43.6	4.8	9.9	57.9
TASMANIA				
1998				
October	195.2	22.8	10.4	58.9
2000				
October	199.2	20.2	9.2	59.1
2001				
August	192.7	22.0	10.2	57.6
September	200.2	21.4	9.7	59.4
October	199.1	18.7	8.6	58.4

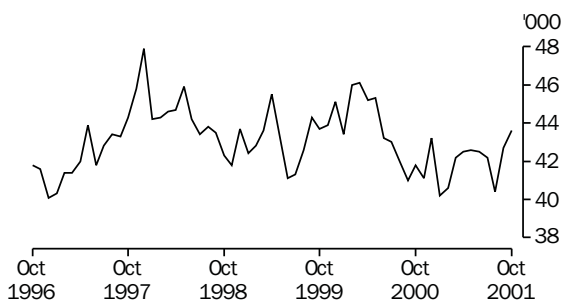
(a) For explanation of terms and concepts, refer to *Labour Force, Australia* (Cat. no. 6203.0).

(b) Data in this table are original series, i.e. they are not part of a seasonally adjusted or a trend series. Accordingly, care should be exercised when using these data.

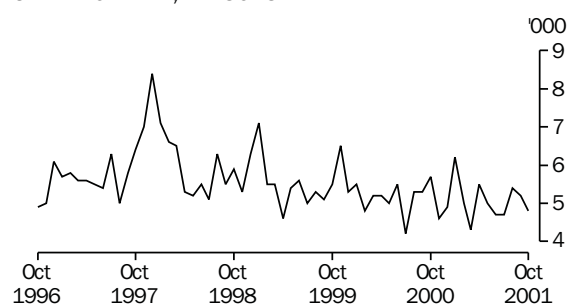
Source: *Labour Force, Selected Summary Tables, Australia* (Cat. no. 6291.0.40.001).

Mersey-Lyell Statistical Division (see table 6)

EMPLOYMENT, PERSONS



UNEMPLOYMENT, PERSONS



7

TEENAGE LABOUR MARKET(a)

	<i>Employed</i>		<i>Unemployed</i>		<i>Labour force</i>	<i>Not in labour force</i>	<i>Civilian population aged 15–19</i>	<i>Unemployment rate</i>	<i>Unemployment population ratio</i>	<i>Participation rate</i>
	<i>Full time</i>	<i>Total</i>	<i>Looking for full time work</i>	<i>Total</i>						
	'000	'000	'000	'000						
ATTENDING NEITHER A SCHOOL NOR A TERTIARY INSTITUTION FULL TIME										
1998										
October	6.1	8.5	2.2	2.2	10.7	1.2	12.0	20.3	18.2	89.6
2000										
October	4.3	7.1	2.6	2.6	9.7	0.8	10.5	27.0	24.9	92.5
2001										
August	5.6	7.1	3.2	3.3	10.4	1.8	12.2	31.4	26.7	85.3
September	5.9	7.7	2.9	2.9	10.6	1.4	12.0	27.4	24.2	88.4
October	5.8	7.2	1.8	2.0	9.2	1.4	10.6	21.8	19.0	87.2
ATTENDING SCHOOL OR A TERTIARY INSTITUTION FULL TIME										
1998										
October	0.2	5.9	0.2	1.4	7.3	15.2	22.4	18.9	6.1	32.4
2000										
October	0.2	8.1	0.4	2.1	10.2	13.9	24.2	20.4	8.6	42.3
2001										
August	0.2	6.5	0.5	1.3	7.8	14.4	22.2	16.9	6.0	35.3
September	0.2	6.3	0.6	1.8	8.2	14.1	22.3	22.5	8.3	36.7
October	0.1	5.8	0.7	2.3	8.1	15.6	23.7	28.7	9.8	34.3
TOTAL										
1998										
October	6.2	14.4	2.4	3.6	18.0	16.4	34.4	19.8	10.3	52.3
2000										
October	4.5	15.2	3.0	4.7	20.0	14.7	34.7	23.6	13.6	57.5
2001										
August	5.7	13.6	3.6	4.6	18.2	16.2	34.4	25.1	13.3	53.0
September	6.2	14.1	3.5	4.8	18.8	15.5	34.3	25.3	13.9	54.9
October	5.8	13.0	2.5	4.3	17.3	16.9	34.3	25.0	12.6	50.6

(a) Persons aged 15–19 years. For explanation of terms and concepts, refer to *Labour Force, Australia* (Cat. no. 6203.0). Care should be exercised when using these series as some estimates are subject to high sampling variability.

Source: ABS data available on request, *Labour Force, Estimates; Labour Force, Teenage Employment and Unemployment, Australia, Preliminary, Data Report* (Cat. no. 6202.0.40.001).

8

ALL EMPLOYED PERSONS BY OCCUPATION(a)

	August 2000			August 2001		Proportion of total employed	
	Persons	Males	Females	Persons	August 2000	August 2001	
	'000	'000	'000	'000	%	%	
Managers and administrators							
Generalist managers	2.0	1.8	0.2	2.0	1.0	1.0	
Specialist managers	3.1	4.0	1.4	5.4	1.6	2.8	
Farmers and farm managers	7.6	6.2	2.0	8.2	3.9	4.2	
Total	12.7	12.0	3.5	15.5	6.4	8.1	
Professionals							
Science, building and engineering professionals	2.9	3.6	0.4	4.1	1.5	2.1	
Business and information professionals	5.4	4.2	2.6	6.8	2.8	3.5	
Health professionals	8.2	2.3	4.4	6.8	4.2	3.5	
Education professionals	10.2	2.0	5.8	7.8	5.2	4.0	
Social, arts and miscellaneous professionals	6.4	2.6	3.2	5.8	3.2	3.0	
Total	33.1	14.8	16.4	31.2	16.8	16.2	
Associate professionals							
Science, engineering and related associate professionals	2.0	3.1	0.5	3.7	1.0	1.9	
Business and administration associate professionals	4.6	3.2	2.4	5.6	2.3	2.9	
Managing supervisors (sales and service)	8.9	4.5	4.2	8.7	4.5	4.5	
Health and welfare associate professionals	1.1	0.9	0.5	1.5	0.6	0.8	
Other associate professionals	3.9	3.0	1.9	4.9	2.0	2.5	
Total	19.4	13.8	9.1	22.9	9.9	11.9	
Tradespersons and related workers							
Mechanical and fabrication engineering tradespersons	4.7	4.1	—	4.1	2.4	2.1	
Automotive tradespersons	2.5	2.6	—	2.6	1.3	1.4	
Electrical and electronics tradespersons	4.3	3.7	0.1	3.7	2.2	1.9	
Construction tradespersons	5.6	5.9	—	5.9	2.8	3.1	
Other tradespersons and related workers	9.7	7.2	3.0	10.1	4.9	5.3	
Total	26.8	23.4	3.1	26.5	13.6	13.8	
Advanced clerical and service workers							
Secretaries and personal assistants	2.0	—	2.0	2.0	1.0	1.0	
Other advanced clerical and service workers	2.8	0.3	3.2	3.5	1.4	1.8	
Total	4.8	0.3	5.1	5.5	2.4	2.8	
Intermediate clerical, sales and service workers							
Intermediate clerical workers	20.8	3.9	16.5	20.4	10.6	10.6	
Intermediate sales and related workers	2.9	1.7	1.0	2.6	1.5	1.4	
Intermediate service workers	12.4	2.8	8.6	11.4	6.3	5.9	
Total	36.1	8.4	26.0	34.4	18.3	17.9	
Intermediate production and transport workers							
Intermediate plant operators	6.0	5.9	0.1	6.0	3.1	3.1	
Intermediate machine operators	2.5	1.1	0.5	1.7	1.3	0.9	
Road and rail transport drivers	6.4	6.1	0.3	6.3	3.3	3.3	
Other intermediate production and transport workers	5.2	2.9	0.8	3.7	2.6	1.9	
Total	20.1	15.9	1.7	17.6	10.2	9.1	
Elementary clerical, sales and service workers							
Elementary clerks	1.5	0.7	0.7	1.3	0.7	0.7	
Elementary sales workers	18.4	3.8	10.7	14.5	9.3	7.5	
Elementary service workers	2.8	0.6	1.0	1.6	1.4	0.8	
Total	22.6	5.1	12.3	17.4	11.5	9.0	
Labourers and related workers							
Cleaners	5.8	1.8	4.0	5.7	2.9	3.0	
Factory labourers	5.1	4.4	1.2	5.6	2.6	2.9	
Other labourers and related workers	10.3	5.6	4.7	10.3	5.2	5.3	
Total	21.1	11.8	9.9	21.7	10.8	11.2	
Total employed	196.7	105.6	87.1	192.7	100.0	100.0	

(a) For explanation of terms and concepts, refer to *Labour Force, Australia* (Cat. no. 6203.0).

Source: ABS data available on request, *Labour Force, Estimates*.

9

WAGE AND SALARY EARNERS, SECTOR AND INDUSTRY(a)

	Employees, May 2001			Percentage distribution	
	Private	Public	Total	May 2000	May 2001
	'000	'000	'000	%	%
Agriculture, forestry & fishing	n.a.	0.6	0.6	0.4	0.3
Mining	1.6	—	1.6	1.1	0.9
Manufacturing	n.p.	n.p.	19.4	12.9	11.3
Electricity, gas & water supply	—	1.9	1.9	1.1	1.1
Construction	n.p.	n.p.	5.5	2.6	3.2
Wholesale trade	9.3	—	9.3	4.9	5.4
Retail trade	29.4	—	29.4	16.8	17.1
Accommodation, cafes & restaurants	10.8	—	10.8	6.2	6.3
Transport & storage	6.0	1.0	7.0	4.0	4.1
Communication services	n.p.	n.p.	2.5	1.4	1.5
Finance and insurance	4.5	0.2	4.7	2.6	2.7
Property & business services	13.8	0.5	14.3	6.9	8.3
Government administration and defence	—	8.9	8.9	6.0	5.2
Education	4.1	14.6	18.6	11.4	10.8
Health and community services	15.1	8.8	24.0	14.5	14.0
Cultural and recreational services	2.7	1.1	3.7	3.1	2.2
Personal and other services	6.6	2.8	9.3	4.1	5.4
Total all industries	129.2	42.4	171.6	100.0	100.0

(a) For explanation of terms and concepts, refer to *Wage and Salary Earners, Australia* (Cat. no. 6248.0).

Source: *Wage and Salary Earners, Australia* (Cat. no. 6248.0).

10

AVERAGE HOURS WORKED

	Average weekly total hours worked, all employed persons(a)		
	Males	Females	Persons
2000			
May	38.9	28.1	34.1
August	38.1	26.7	33.0
November	39.5	27.6	34.2
2001			
February	38.5	26.2	33.0
May	40.4	27.3	34.5
August	38.0	27.3	33.1

(a) For explanation of terms and concepts, refer to *Labour Force, Australia* (Cat. no. 6203.0).

Source: ABS data available on request; *Labour Force Survey*.

11

JOB VACANCIES(a)(b)

	no.	rate(c)
	'000	%
2000		
May	1.3	0.8
August	2.5	1.5
November	1.9	1.1
2001		
February	2.1	1.2
May	1.4	0.9
August	1.1	0.7

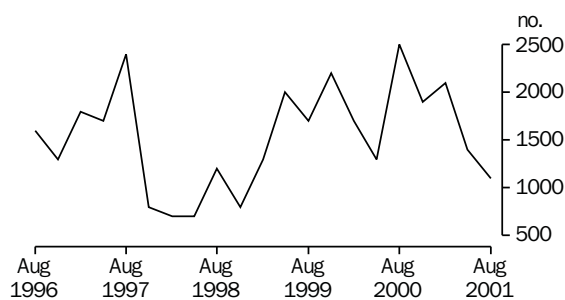
(a) For explanation of terms and concepts, refer to *Job Vacancies, Australia* (Cat. no. 6354.0).

(b) Care should be exercised in using these series as some estimates are subject to high sampling variability.

(c) Job vacancies expressed as a percentage of the number of employees plus job vacancies.

Source: *Job Vacancies, Australia* (Cat.no. 6354.0).

JOB VACANCIES, TASMANIA



12

INDUSTRIAL DISPUTES(a)

	Working days lost	Twelve months ended	Working days lost per thousand employees
	'000		no.
2000			
August	—	August	6
September	—	September	6
October	—	October	6
November	—	November	6
December	0.2	December	7
2001			
January	—	January	6
February	—	February	6
March	—	March	5
April	0.1	April	4
May	—	May	3
June	0.1	June	3
July	0.2	July	4
August	—	August	4
Twelve months ended			
August 2001	0.6

(a) For explanation of terms and concepts, refer to *Industrial Disputes, Australia* (Cat. no. 6321.0).

Source: *Industrial Disputes, Australia* (Cat.no. 6321.0).

AVERAGE WEEKLY EARNINGS OF EMPLOYEES(a)—ORIGINAL AND TREND

	MALES			FEMALES			PERSONS		
	Full-time adult ordinary time earnings	Full-time adult total earnings	All males total earnings	Full-time adult ordinary time earnings	Full-time adult total earnings	All females total earnings	Full-time adult ordinary time earnings	Full-time adult total earnings	All employees total earnings
ORIGINAL									
2000									
May	788.10	828.20	695.80	643.40	659.10	428.00	737.20	768.80	558.10
August	784.20	819.60	677.60	645.40	660.90	422.90	736.50	765.10	547.40
November	784.60	824.70	683.20	663.40	685.10	431.00	741.30	774.80	549.50
2001									
February	786.20	819.50	678.00	676.90	688.80	462.00	745.80	771.20	568.40
May	788.70	820.90	685.20	691.30	704.10	462.90	755.90	781.50	576.60
August	789.20	821.90	688.50	701.10	717.70	474.10	758.10	785.20	581.90
TREND(b)									
2000									
May	782.20	818.90	689.10	644.70	662.30	431.00	735.20	765.00	557.90
August	786.60	825.20	687.80	650.30	667.90	428.50	739.30	770.40	553.50
November	785.50	823.00	680.30	660.20	676.20	435.30	740.70	770.70	553.10
2001									
February	785.20	819.20	677.50	675.10	689.70	450.70	745.40	772.70	562.00
May	788.60	821.00	683.90	691.90	706.70	466.30	754.70	780.70	575.50
August	792.60	825.70	695.50	707.80	723.90	478.80	764.60	791.40	589.60

(a) For explanation of terms and concepts, refer to *Average Weekly Earnings, Australia* (Cat. no. 6302.0).

(b) ABS trend estimates for the most recent months are revised, see Notes on page 2.

Source: *Average Weekly Earnings, Australia* (Cat. no. 6302.0).

	Index numbers				Percentage change	
	Dec qtr 2000	Mar qtr 2001	June qtr 2001	Sep qtr 2001	Mar qtr 2001 to June qtr 2001	Jun qtr 2001 to Sep qtr 2001
SELECTED INDUSTRIES(c)						
Manufacturing	108.5	109.2	109.9	111.1	0.6	1.1
Retail trade	108.9	109.1	109.5	110.7	0.4	1.1
Government administration and defence	107.5	107.9	108.9	110.2	0.9	1.2
Education	111.0	111.4	114.2	114.6	2.5	0.4
Health and community services	107.5	107.7	108.6	109.8	0.8	1.1
All industries(d)	108.9	109.5	110.3	111.5	0.7	1.1
SELECTED OCCUPATIONS						
Professionals	109.8	110.4	111.8	113.0	1.3	1.1
Associate professionals	109.7	110.2	110.7	111.7	0.5	0.9
Tradespersons & related workers	108.2	109.0	109.1	110.7	0.1	1.5
Intermediate clerical, sales & service workers	108.1	108.9	110.2	111.1	1.2	0.8
Intermediate production & transport workers	108.2	109.1	110.0	111.1	0.8	1.0
Elementary clerical, sales & service workers	110.9	111.3	112.1	112.9	0.7	0.7
Labourers & related workers	108.1	108.5	109.4	110.0	0.8	0.5
All occupations	108.9	109.5	110.3	111.5	0.7	1.1

(a) Base of each index: September quarter 1997 = 100.0.

(b) These indexes are a measure of quarterly changes in wage and salary costs for employee jobs. They are one of four sets of indexes that together comprise the Wage Cost Index. For explanation of terms and concepts, refer to *Wage Cost Index, Australia* (Cat. no. 6345.0).

(c) Industry is shown at the ANZSIC division level for selected divisions.

(d) Excludes Agriculture, forestry and fishing.

Source: ABS data available on request; Wage Cost Index.

15

SUMMARY OF ANNUAL MOVEMENTS IN WAGES AND PRICES(a), PERCENTAGE CHANGE FROM PREVIOUS YEAR—ORIGINAL

	CPI all groups—Hobart(a) %	Price index of materials used in house building all groups—Hobart %	Price index of materials used in building other than house building all groups—Hobart %	Average weekly total earnings, full-time adult employees(b) %
1998–99	1.0	1.0	0.9	2.4
1999–2000	1.9	1.3	0.4	2.5
2000–01	5.8	1.8	0.3	3.2
1999				
September	0.4	–0.3	0.1	0.8
December	1.1	0.2	–0.2	2.3
2000				
March	2.6	2.0	0.6	0.6
June	3.3	3.4	1.2	6.5
September	6.5	(c)2.5	(c)–0.5	5.4
December	5.8	2.4	0.6	3.1
2001				
March	5.4	1.4	0.8	2.7
June	5.5	0.8	0.3	1.7
September	1.1	1.7	2.0	2.6

(a) See note 5 on page 2 of this issue on the impacts of The New Tax System (TNTS).

(b) March, June, September and December data relates to February, May, August and November survey dates as published in *Average Weekly Earnings, Australia* (Cat. no. 6302.0).

(c) This quarter affected by the removal of the Wholesale Sales Tax from 1 July 2000.

Source: ABS data available on request; *Producer Price Index* (Cat. no. 6427.0); *Consumer Price Index, Australia* (Cat. no. 6401.0); *Average Weekly Earnings, Australia* (Cat. no. 6302.0).

16

HOUSE PRICE INDEX NUMBERS(a)(b)

	Established house price index		Project home price index	
	Index	% change(c)	Index	% change(c)
1998–99	123.2	–1.8	123.3	—
1999–2000	129.0	4.7	126.2	2.4
2000–01	134.2	4.0	140.7	11.5
1999				
June	123.6	–0.1	123.3	—
September	125.3	1.4	124.0	0.6
December	127.8	2.0	125.4	1.1
2000				
March	128.6	0.6	127.5	1.7
June	134.2	4.4	127.9	0.3
September	134.3	0.1	(d)140.3	(d)9.7
December	133.7	–0.4	140.3	—
2001				
March	133.8	0.1	140.5	0.1
June	135.1	1.0	141.8	0.9

(a) Base of each Index: 1989–90 = 100.

(b) Used in calculating the mortgage interest charges component of the Consumer Price Index.

(c) Percentage change over previous period.

(d) See note 5 on page 2 of this issue on the impacts of The New Tax System (TNTS) introduced on 1 July 2000.

Source: *House Price Indexes: Eight Capital Cities* (Cat. no. 6416.0).

							<i>Hobart</i>
	<i>Food</i>	<i>Clothing and Footwear</i>	<i>Housing</i>	<i>Household furnishings, supplies and services</i>	<i>Transportation</i>	<i>Alcohol and tobacco</i>	
1998							
September	124.7	105.1	95.6	120.4	120.4	159.6	
December	125.0	105.7	95.4	120.8	118.6	159.1	
1999							
March	125.5	104.7	95.8	119.5	118.4	161.5	
June	126.8	104.6	95.9	119.4	120.4	160.0	
September	126.3	104.5	96.9	119.3	123.1	158.1	
December	127.5	103.9	97.4	119.1	123.8	163.3	
2000							
March	127.8	104.9	98.8	120.2	126.6	167.2	
June	129.1	105.0	99.2	121.2	129.3	169.9	
September	130.9	112.8	105.5	124.5	133.3	179.8	
December	132.0	112.9	105.8	124.6	130.4	181.6	
2001							
March	134.3	110.7	106.9	125.6	131.4	185.4	
June	136.0	112.2	107.2	126.6	134.6	188.6	
September	135.7	109.3	107.4	127.3	131.5	189.4	

							<i>Hobart</i>	<i>Weighted average of eight capital cities</i>	
	<i>Health</i>	<i>Education</i>	<i>Index, all groups</i>	<i>% change over previous period, all groups</i>	<i>Index</i>	<i>% change over previous period</i>			
1998									
September	190.4	190.0	122.8	0.7	121.3	0.2			
December	187.7	190.0	122.7	-0.1	121.9	0.5			
1999									
March	164.9	198.8	122.1	-0.5	121.8	-0.1			
June	165.7	198.8	122.5	0.3	122.3	0.4			
September	173.3	198.8	123.3	0.7	123.4	0.9			
December	172.0	198.8	124.0	0.6	124.1	0.6			
2000									
March	175.1	206.2	125.3	1.0	125.2	0.9			
June	177.7	206.2	126.5	1.0	126.2	0.8			
September	178.0	206.5	131.3	3.8	130.9	3.7			
December	177.4	206.5	131.2	-0.1	131.3	0.3			
2001									
March	181.5	215.1	132.1	0.7	132.7	1.1			
June	181.4	215.1	133.4	1.0	133.8	0.8			
September	180.3	215.0	132.8	-0.4	134.2	0.3			

(a) Base year: 1989-90 = 100.

(b) Further information on construction of CPI indexes is contained in the bulletin *Australian Consumer Price Index Concepts, Sources and Methods* (Cat. no. 6461.0).

(c) As a result of the introduction of the 14th Series Australian CPI there have been changes to some groups and restructuring of some others. See Appendix A4 of the September quarter issue of *Consumer Price Index, Australia* (Cat. no. 6401.0) for more information.

(d) See Note 5 on page 2 of this issue on the impacts of The New Tax System (TNTS) introduced on 1 July 2000.

Source: *Consumer Price Index, Australia* (Cat. no. 6401.0).

Index numbers for selected major building materials

	<i>Structural timber</i>	<i>Clay bricks</i>	<i>Ready mixed concrete</i>	<i>Precast concrete products</i>	<i>Steel decking, cladding etc.</i>	<i>Structural steel</i>
1998-99	109.1	130.8	119.5	131.6	110.8	128.0
1999-2000	114.4	129.1	118.1	131.6	109.6	128.8
2000-01	120.6	132.6	117.9	131.6	107.6	129.3
1999						
September	108.2	126.9	119.4	131.6	113.7	128.8
December	111.7	126.9	118.0	131.6	104.6	128.8
2000						
March	116.9	130.9	117.5	131.6	110.1	128.8
June	120.7	131.6	117.5	131.6	109.8	128.8
September(c)	120.9	131.6	117.6	131.6	106.4	129.1
December	120.9	131.8	117.6	131.6	108.2	129.4
2001						
March	121.4	131.8	119.4	131.6	108.2	129.4
June	119.1	135.3	116.9	131.6	107.5	129.4
September	122.3	135.3	117.0	131.6	107.7	129.4

Index numbers for selected major building materials

	<i>Reinforcing steel bar, fabric and mesh</i>	<i>Aluminium windows</i>	<i>Fabricated steel products</i>	<i>Builders hardware</i>	<i>Sand and aggregate</i>	<i>Paint and other coatings</i>	<i>Non-ferrous pipes and fittings</i>
1998-99	113.4	107.3	116.0	113.4	127.9	133.3	161.2
1999-2000	110.5	108.5	114.0	116.0	144.0	133.7	168.2
2000-01	107.8	116.8	114.0	119.3	147.9	135.0	185.6
1999							
September	113.4	107.0	116.1	110.8	135.4	131.7	162.4
December	110.2	107.0	113.6	114.8	139.4	133.5	166.0
2000							
March	109.1	109.9	113.1	120.2	150.4	135.2	167.2
June	109.1	110.1	113.1	118.1	150.9	134.2	177.0
September(c)	107.8	110.1	113.1	117.3	145.5	131.8	177.2
December	107.9	116.6	113.0	118.8	146.1	135.7	183.8
2001							
March	107.8	120.3	116.1	119.6	151.6	136.2	193.1
June	107.8	120.3	113.9	121.4	148.4	136.2	188.1
September	107.8	120.3	113.9	123.4	147.1	137.6	183.2

(a) Base year: 1989-90 = 100.

(b) This quarter affected by the removal of the Wholesale Sales Tax from 1 July 2000

....continued

	<i>All electrical materials</i>		<i>All mechanical services</i>		<i>All plumbing materials</i>	
	<i>Index</i>	<i>% change over previous period</i>	<i>Index</i>	<i>% change over previous period</i>	<i>Index</i>	<i>% change over previous period</i>
1998-99	115.8	-1.2	119.0	1.7	124.5	2.1
1999-2000	117.6	1.6	120.3	1.1	127.0	2.0
2000-01	117.3	-0.3	118.2	-1.7	132.7	4.5
1999						
September	115.9	0.6	119.3	-0.2	122.3	-1.8
December	117.5	1.4	119.8	0.4	126.5	3.4
2000						
March	118.3	0.7	120.3	0.4	128.0	1.2
June	118.7	0.3	121.9	1.3	131.0	2.3
September(c)	115.8	-2.4	117.3	-3.8	129.1	-1.5
December	117.6	1.6	118.0	0.6	131.8	2.1
2001						
March	117.8	0.2	118.4	0.3	136.0	3.2
June	117.9	0.1	119.0	0.5	134.0	-1.5
September	118.2	0.3	119.8	0.7	131.8	-1.6
	<i>All groups excluding electrical materials and mechanical services</i>				<i>All groups</i>	
	<i>Index</i>	<i>% change over previous period</i>	<i>Index</i>	<i>% change over previous period</i>		
1998-99	118.8	0.7	118.5	0.9		
1999-2000	119.1	0.3	119.0	0.4		
2000-01	120.5	1.2	119.3	0.3		
1999						
September	118.8	0.3	118.5	0.2		
December	118.4	-0.3	118.4	-0.1		
2000						
March	119.3	0.8	119.2	0.7		
June	119.7	0.3	119.7	0.4		
September(c)	118.8	-0.8	117.9	-1.5		
December	120.1	1.1	119.1	1.0		
2001						
March	121.7	1.3	120.2	0.9		
June	121.3	-0.3	120.1	-0.1		
September	121.2	-0.1	120.3	0.2		

(a) Base year: 1989-90 = 100.

(b) Index numbers in this table have been recompiled to reflect the change to a quarterly collection basis from June 1997.

(c) This quarter affected by the removal of the Wholesale Sales Tax from 1 July 2000.

Source: ABS data available on request; Producer Price Index (Cat. no. 6427.0).

	Dairy products(a)			Staff hours worked	
	Whole milk(b)	Factory butter(c)	Factory cheese	Textile manufacturing(d)	Vegetable preserving
	million litres	tonnes	tonnes	'000	'000
1998-99	603.4	11 546	29 973	1 061	1 084
1999-2000	608.6	8 209	33 344	1 032	1 019
2000-01	589.7	5 949	32 355	938	1 037
2000					
September	62.0	203	3 611	75	62
October	71.1	865	3 590	97	62
November	84.1	1 080	4 078	96	100
December	73.0	1 101	4 039	60	86
2001					
January	62.2	277	3 383	50	65
February	49.2	387	2 665	83	97
March	44.1	484	2 607	74	94
April	41.8	377	2 847	53	90
May	40.0	290	2 490	94	119
June	23.2	409	1 722	75	85
July	15.6	n.y.a.	n.y.a.	88	94
August	28.8	n.y.a.	n.y.a.	94	101
September	65.4	n.y.a.	n.y.a.	83	84

	Refined zinc	Metallurgical refining	Electricity
	'000 tonnes	Index(e)	million kW.h
1998-99	214.3	125.0	9 910
1999-2000	231.7	133.2	10 050
2000-01	233.1	138.4	10 150
2000			
September	18.0	134.3	(Sept qtr) 2 760
October	20.5	145.1	..
November	18.5	136.2	..
December	12.5	126.0	(Dec qtr) 2 410
2001			
January	20.1	140.3	..
February	18.8	136.1	..
March	20.0	141.9	(Mar qtr) 2 360
April	19.3	137.0	..
May	22.3	139.9	..
June	21.6	136.1	(June qtr) 2 620
July	18.9	132.7	..
August	20.6	137.0	..
September	20.9	136.2	(Sept qtr) 2 710

(a) Source: Australian Dairy Corporation.

(b) Includes the whole milk equivalent of farm cream intake.

(c) Includes butter equivalent of butter oil.

(d) Includes spinning, weaving and carpet making. Reported by establishments which manufacture textiles only, or manufacture clothing and textiles in the one plant.

(e) Metallurgical refining index (Base year: 1979-80 = 100.0). Output from selected establishments covering the smelting and refining of ferro-alloys, zinc and aluminium. The weighting pattern is based on the establishments' value added as derived from the 1979-80 manufacturing Census. For multi product establishments, value added was apportioned to products on the basis of gross receipts from each product.

Source: ABS data available on request; Employees Hours Worked Survey; Monthly Production Survey; Manufacturing Survey.

20

LIVESTOCK SLAUGHTERING—ORIGINAL

	Cattle					
	<i>Bulls, bullocks and steers</i>	<i>Cows and heifers</i>	<i>Calves</i>	<i>Sheep</i>	<i>Lambs</i>	<i>Pigs</i>
	'000	'000	'000	'000	'000	'000
1998–99	94.8	116.3	61.0	439.9	480.1	81.2
1999–2000	109.0	108.9	62.1	589.9	456.3	70.1
2000–01	90.2	94.2	49.7	364.7	416.1	57.6
1999						
September	8.0	6.6	27.2	24.3	32.0	6.9
2000						
September	6.2	4.3	22.9	18.7	37.9	4.8
October	5.9	5.8	5.6	24.3	32.2	4.1
November	7.1	6.9	0.9	20.7	31.0	4.0
December	9.4	9.6	0.2	35.0	40.7	5.3
2001						
January	8.8	7.7	0.2	41.0	32.1	3.8
February	9.5	9.2	0.1	47.6	33.1	4.2
March	10.5	10.8	0.6	55.1	37.8	5.7
April	6.5	8.6	1.1	26.9	25.7	4.9
May	6.6	9.2	1.0	29.0	27.4	5.0
June	7.0	11.7	0.6	25.6	42.7	5.9
July	6.4	6.4	1.4	17.7	35.3	4.2
August	5.8	4.2	18.2	15.0	46.4	4.5
September	5.0	4.0	16.2	15.8	36.3	5.1

Source: ABS data available on request; Livestock Slaughtered.

21

LIVESTOCK SLAUGHTERING—SEASONALLY ADJUSTED(a) AND TREND(b)

	Seasonally adjusted			Trend		
	<i>Cattle and calves</i>	<i>Sheep and lambs</i>	<i>Pigs</i>	<i>Cattle and calves</i>	<i>Sheep and lambs</i>	<i>Pigs</i>
	'000	'000	'000	'000	'000	'000
1999						
September	25.6	84.1	6.4	24.5	86.1	6.3
2000						
September	18.9	79.0	4.9	18.5	77.1	4.9
October	18.7	75.5	4.9	18.9	72.3	4.8
November	19.2	54.8	4.5	19.7	68.4	4.8
December	20.7	67.1	4.9	20.5	66.3	4.8
2001						
January	22.0	59.1	4.8	20.9	58.8	4.8
February	20.7	60.3	4.7	20.7	58.7	4.8
March	21.5	68.9	4.8	20.0	58.4	4.8
April	18.3	52.9	5.2	19.1	58.0	4.8
May	16.1	54.9	4.6	18.2	57.7	4.7
June	18.0	63.9	4.6	17.6	68.7	4.6
July	17.5	65.0	4.3	17.3	71.7	4.6
August	17.9	90.5	4.4	17.1	75.2	4.7
September	16.7	78.7	5.4	16.9	78.6	4.8

(a) Seasonally adjusted factors are reviewed annually to take account of each additional year's original data. The results of the review are used to compile revised seasonally adjusted and trend estimates; see Notes page 2.

(b) ABS trend estimates for the most recent months are revised; see Notes page 2.

Source: ABS data available on request; Livestock Slaughtered.

22

MEAT PRODUCTION(a)

	<i>Beef</i>	<i>Veal</i>	<i>Mutton</i>	<i>Lamb</i>	<i>Pig meat(b)</i>	<i>Total</i>
	<i>tonnes</i>	<i>tonnes</i>	<i>tonnes</i>	<i>tonnes</i>	<i>tonnes</i>	<i>tonnes</i>
1998-99	53 271	1 241	8 724	9 222	5 242	77 700
1999-2000	57 557	1 236	11 796	8 833	4 403	83 825
2000-01	48 771	996	7 232	8 014	3 582	68 596
1999						
September	3 897	524	480	621	439	5 961
2000						
September	2 884	444	363	737	304	4 733
October	3 181	112	478	617	257	4 646
November	3 908	21	415	595	254	5 194
December	5 200	8	717	780	325	7 030
2001						
January	4 511	7	826	612	235	6 191
February	4 980	5	948	636	253	6 821
March	5 549	14	1 099	723	349	7 733
April	3 811	26	525	492	302	5 155
May	4 009	25	571	529	310	5 444
June	4 630	15	507	829	370	6 351
July	3 400	29	347	692	254	4 722
August	2 762	357	294	942	276	4 630
September	2 500	317	311	721	314	4 163

(a) Carcass weight.

(b) Includes pork used for production of bacon and ham.

Source: ABS data available on request; Livestock Slaughtered.

23

PRINCIPAL MINERAL CONCENTRATES PRODUCED

	<i>Copper</i>	<i>Iron (pellets)</i>	<i>Lead</i>	<i>Lead-zinc</i>	<i>Tin</i>	<i>Zinc</i>
	<i>'000 tonnes</i>	<i>'000 tonnes</i>	<i>'000 tonnes</i>	<i>'000 tonnes</i>	<i>'000 tonnes</i>	<i>'000 tonnes</i>
1998-99	113.5	1 816.1	101.8	12.6	12.5	382.3
1999-2000	104.3	2 068.3	98.7	7.9	14.8	311.9
2000-01	n.y.a.	2 027.3	40.6	—	14.8	141.4
1999						
June	27.3	403.4	24.7	1.5	3.6	98.0
September	27.5	479.5	28.4	2.7	3.9	94.8
December	26.9	568.2	28.1	2.5	4.0	86.2
2000						
March	26.2	517.7	22.4	1.4	3.3	70.4
June	23.8	502.9	19.8	1.3	3.6	60.4
September	21.6	544.2	7.7	—	3.2	26.8
December	24.9	500.7	9.7	—	3.4	33.5
2001						
March	29.3	534.9	12.1	—	3.9	43.2
June	29.5	447.5	11.2	—	4.3	39.5

Source: Mineral Resources Tasmania, Department of Infrastructure, Energy and Resources.

	Tasmanian-grown logs delivered					Sawn, peeled and sliced timber produced(a)				
	<i>Eucalypts</i>	<i>Hardwoods, excluding eucalypts(b)</i>	<i>Plant- ation(c)</i> <i>softwoods</i>	<i>Native soft- woods(d)</i>	<i>Total</i>	<i>Eucalypts</i>	<i>Hardwoods, excluding eucalypts(b)</i>	<i>Plant- ation(c)</i> <i>softwoods</i>	<i>Native soft- woods(d)</i>	<i>Total</i>
	'000 m ³	'000 m ³	'000 m ³	'000 m ³	'000 m ³	'000 m ³	'000 m ³	'000 m ³	'000 m ³	'000 m ³
1998-99	499.9	22.6	351.9	1.0	875.4	159.7	5.1	169.7	0.3	334.8
1999-2000	510.1	28.8	396.2	0.9	936.9	169.7	5.3	190.6	0.4	366.0
2000-01	468.5	24.8	369.9	2.6	865.8	157.9	6.3	174.1	0.2	338.6
1999										
September	136.0	6.3	109.4	0.2	252.0	46.2	1.3	49.1	0.1	96.8
December	132.5	5.1	87.8	0.2	225.6	45.8	1.5	46.5	0.1	93.9
2000										
March	104.3	10.0	100.7	0.4	215.3	37.8	1.3	47.8	0.1	87.0
June	137.3	7.3	98.2	0.2	243.1	39.8	1.3	47.3	0.1	88.3
September	130.7	5.0	103.8	0.3	239.9	42.4	1.7	46.6	0.1	90.9
December	118.1	4.3	82.7	0.2	205.2	41.6	1.3	41.4	—	84.3
2001										
March	105.3	6.7	91.9	1.8	205.6	37.2	1.5	42.4	0.1	81.2
June	116.3	8.8	91.5	0.2	216.9	37.4	1.8	43.6	—	82.9
September	129.8	5.6	115.9	0.1	251.4	42.1	1.8	50.9	0.1	95.0

(a) Includes plywood, veneer and sliced timber production converted to an equivalent cubic measurement.

(b) Includes blackwood, myrtle, sassafras etc.

(c) Radiata pine.

(d) Includes Huon pine, celery top pine and King William pine.

Source: ABS Forest Products Survey.

25

CHIPPING AND GRINDING OF WOOD(a)(b)

	Producing locations(c)	Materials used(d)		Chipped and ground wood production '000 tonnes green weight
		Logs delivered(e)	Sawmill offcuts	
		no.	'000 m ³	
1998-99	29	3 459.6	373.4	3 929.9
1999-2000	30	4 526.8	452.5	5 145.3
2000-01	29	n.p.	n.p.	n.p.
1999				
September	30	1 056.8	134.1	1 225.3
December	30	1 103.8	96.4	1 207.3
2000				
March	30	1 152.1	104.6	1 308.7
June	30	1 214.1	117.4	1 404.0
September	31	1 259.5	104.0	1 451.7
December	30	1 328.2	120.3	1 420.6
2001				
March	30	1 177.9	89.4	1 236.4
June	29	n.p.	n.p.	n.p.
September	28	n.p.	n.p.	n.p.

(a) Both hardwoods and softwoods, separate details are not available.

(b) With recent acquisitions, resulting in increased concentration of ownership in the woodchip industry, production data collected by the ABS are no longer releasable. Alternative data sources are being explored.

(c) Capable of producing at end of year or actually producing during quarter.

(d) Data reported by weight, converted to cubic measure by the factor of 0.95 m³ per tonne.

(e) Includes log equivalent of limbwood and billets.

Source: ABS Forest Products Survey.

26

LOGS DELIVERED FOR MILLING OR CHIPPING

	Sawmilling and plywood milling			Chipping and grinding(a)(b)			Total		
	Crown land(c)	Private land	Total	Crown land(c)	Private land	Total	Crown land(c)	Private land	Total
	'000 m ³	'000 m ³	'000 m ³	'000 m ³	'000 m ³	'000 m ³	'000 m ³	'000 m ³	'000 m ³
1998-99	754.2	121.2	875.4	1 562.6	1 897.0	3 459.6	2 316.7	2 018.2	4 334.9
1999-2000	834.4	101.6	935.9	2 440.5	2 086.3	4 526.8	3 274.9	2 187.8	5 462.7
2000-01	770.6	95.2	865.8	n.p.	n.p.	n.p.	n.p.	n.p.	n.p.
1999									
September	221.8	30.2	252.0	554.0	502.7	1 056.8	775.8	532.9	1 308.7
December	202.5	23.1	225.6	643.1	460.7	1 103.8	845.6	483.8	1 329.4
2000									
March	192.1	23.2	215.3	585.3	566.9	1 152.1	777.3	590.1	1 367.4
June	218.0	25.1	243.1	658.1	555.9	1 214.1	876.1	581.0	1 457.1
September	219.7	20.2	239.9	729.7	529.8	1 259.5	949.4	550.1	1 499.4
December	184.3	20.9	205.2	779.7	548.5	1 328.2	964.0	569.5	1 533.5
2001									
March	181.1	24.5	205.6	651.7	526.3	1 177.9	832.8	550.8	1 383.6
June	188.4	28.5	216.9	n.p.	n.p.	n.p.	n.p.	n.p.	n.p.
September	227.6	23.8	251.4	n.p.	n.p.	n.p.	n.p.	n.p.	n.p.

(a) Logs used are generally below sawmilling standard: includes log equivalent of limbwood and billets.

(b) With recent acquisitions, resulting in increased concentration of ownership in the woodchip industry, production data collected by the ABS are no longer releasable. Alternative data sources are being explored.

(c) Comprises all areas (including concession areas) from which royalties are payable to Forestry Tasmania.

Source: ABS Forest Products Survey.

	Dwelling units						Non-residential buildings(d)		Value(e)
	New houses	New other residential buildings(a)	Other dwelling units created (conversions etc.)(b)	Total dwelling units	New dwelling units	Alterations and additions to residential buildings(c)	Private	Total	Total of all building
	no.	no.	no.	no.	\$m	\$m	\$m	\$m	\$m
1998-99	1 297	104	9	1 410	131.2	36.8	115.8	174.5	342.6
1999-2000	1 608	230	55	1 893	193.4	50.7	120.7	160.6	404.7
2000-01	1 108	80	6	1 194	127.5	43.1	95.2	152.5	323.0
2000									
September	100	19	—	119	12.7	2.2	21.5	23.2	38.1
October	105	16	—	121	r 13.6	4.5	9.5	12.6	30.7
November	112	4	—	116	r 12.1	3.5	9.6	13.1	28.8
December	53	4	—	57	6.3	3.2	9.4	12.4	22.0
2001									
January	89	—	2	91	9.4	3.3	1.9	16.4	29.1
February	83	23	—	106	11.2	4.2	3.3	4.1	19.5
March	84	4	—	88	r 9.6	4.1	5.3	8.1	21.7
April	65	3	—	68	7.5	3.3	7.4	11.0	21.8
May	133	—	1	134	14.2	r 4.7	12.4	26.7	45.6
June	119	7	1	127	14.1	r 3.6	6.1	6.8	24.5
July	113	4	1	118	12.6	3.9	9.6	9.9	26.4
August	143	4	2	149	15.8	5.3	10.0	11.3	32.4
September	145	45	—	190	22.0	5.4	9.4	10.7	38.1

(a) New individual dwelling units (e.g. flats, home units and villa units).

(b) From alterations and additions to residential building, new or alteration and addition work on non-residential building or conversions of non-residential building to residential building.

(c) Valued at \$10,000 and over. Includes conversions and dwelling units approved as part of alterations and additions or as part of the construction of non-residential building.

(d) Comprises non-residential building (new plus alterations and additions) valued at \$50,000 and over.

(e) Value data from July 2000 reference month onward are recorded inclusive of GST. See Cat. no. 8731.0 or page 2 of this publication for more details.

Source: *Building Approvals, Australia* (Cat. no. 8731.0).

	Total number of dwellings(a)			Total value of commitments(b)		
	Original	Seasonally adjusted	Trend	Original	Seasonally adjusted	Trend
	no.	no.	no.	\$m	\$m	\$m
2000						
September	948	1 015	1 087	71	75	80
October	1 075	1 073	1 092	78	78	78
November	1 162	1 082	1 087	83	79	76
December	1 095	1 228	1 071	75	80	73
2001						
January	899	1 017	1 050	58	64	72
February	875	884	1 025	65	65	72
March	1 131	1 065	999	84	77	73
April	957	969	983	73	76	75
May	1 132	987	979	89	79	78
June	963	1 023	981	79	88	80
July	875	902	981	70	69	82
August	1 097	1 011	981	91	86	83
September	911	991	974	79	87	83

(a) Includes new dwellings, established dwellings and refinancing. Excludes alterations and additions.

(b) Commitment is a firm offer of housing finance. It either has been, or is normally expected to be, accepted. Includes commitments to provide housing finance to employees and commitments accepted and cancelled in the same month. Excludes alterations and additions. Includes refinancing.

Source: *Housing Finance for Owner Occupation, Australia (Cat. no. 5609.0)*.

	ASSET					INDUSTRY	
	Buildings and structures	Equipment, plant and machinery	Total asset	Mining	Manufacturing	Other selected industries	Total all industries
	\$m	\$m	\$m	\$m	\$m	\$m	\$m
1998-99	130	345	475	48	144	283	475
1999-2000	70	385	456	53	128	275	456
2000-01	91	425	515	85	151	279	515
1999							
June	35	89	124	13	44	67	124
September	14	83	97	10	35	52	97
December	15	98	114	8	33	73	114
2000							
March	14	74	88	14	25	49	88
June	28	130	157	20	36	101	157
September	30	100	130	35	35	61	130
December	24	117	141	15	40	86	141
2001							
March	21	84	105	11	30	64	105
June	16	124	140	24	47	68	140

(a) Estimates based on a sample survey and therefore subject to sampling variability. Covers selected industries only — mining, manufacturing, finance, property and other selected industries.

(b) Current prices.

(c) See Cat. no. 5646.0 or page 2 of this issue on the impacts of The New Tax System (TNTS) introduced on 1 July 2000.

Source: *Private New Capital Expenditure, State Estimates (Cat. no. 5646.0)*.

	<i>Deposits</i>				
	<i>Current bearing interest</i>	<i>Current not bearing interest</i>	<i>Fixed</i>	<i>Investment savings accounts</i>	<i>Statement savings accounts</i>
	<i>\$m</i>	<i>\$m</i>	<i>\$m</i>	<i>\$m</i>	<i>\$m</i>
2000					
September	1 271	270	1 198	281	244
October	1 298	279	1 228	280	247
November	1 270	284	1 154	277	249
December	1 329	308	1 196	276	251
2001					
January	1 319	296	1 243	275	248
February	1 300	273	1 236	275	249
March	1 332	295	1 243	279	251
April	1 338	296	1 132	281	255
May	1 322	287	1 214	283	266
June	1 382	289	1 106	292	275
July	1 372	283	1 267	294	284
August	1 376	260	1 228	293	293
September	1 409	260	1 235	295	302

	<i>Deposits</i>			
	<i>Passbook/school savings accounts</i>	<i>Other</i>	<i>Total</i>	<i>Loans(b)</i>
	<i>\$m</i>	<i>\$m</i>	<i>\$m</i>	<i>\$m</i>
2000				
September	40	89	3 392	5 099
October	39	88	3 459	5 103
November	39	85	3 359	5 147
December	39	85	3 484	5 195
2001				
January	39	87	3 508	5 222
February	39	91	3 463	5 254
March	39	98	3 536	5 232
April	39	92	3 433	5 228
May	39	94	3 505	5 427
June	40	105	3 489	5 327
July	40	101	3 641	5 375
August	40	102	3 592	5 415
September	40	104	3 645	5 387

(a) Details are the averages of weekly figures for each month. The figures are derived from returns submitted by banks authorised under the Banking Act together with similar returns voluntarily submitted by the State banks; they exclude the Reserve Bank.

(b) Excludes non-resident loans.

Source: Reserve Bank of Australia.

ACCOMMODATION ESTABLISHMENTS(a)

	<i>Establish- ments</i>	<i>Guest rooms</i>	<i>Bed spaces</i>	<i>Persons employed</i>	<i>Room nights occupied</i>	<i>Room occupancy rate</i>	<i>Guest nights</i>	<i>Bed occupancy rate</i>	<i>Guest arrivals</i>	<i>Takings from accommodation(b)</i>
	<i>no.</i>	<i>no.</i>	<i>no.</i>	<i>no.</i>	<i>'000</i>	<i>%</i>	<i>'000</i>	<i>%</i>	<i>'000</i>	<i>\$'000</i>
LICENSED HOTELS WITH FACILITIES										
2000										
June qtr	55	2 871	7 870	2 813	128.5	49.2	205.7	28.7	114.7	11 098
2001										
April	n.a.	n.a.	n.a.	n.a.	47.3	54.1	79.5	32.9	43.9	4 597
May	n.a.	n.a.	n.a.	n.a.	40.6	44.9	62.8	25.2	34.3	3 861
June	n.a.	n.a.	n.a.	n.a.	31.1	35.6	50.1	20.7	26.7	2 843
June qtr	54	2 913	8 046	2 751	118.9	44.9	192.4	26.3	104.9	11 301
MOTELS AND GUEST HOUSES WITH FACILITIES										
2000										
June qtr	51	1 749	5 420	671	74.5	46.8	137.8	27.9	77.1	5 880
2001										
April	n.a.	n.a.	n.a.	n.a.	28.7	56.8	56.5	35.9	31.8	2 639
May	n.a.	n.a.	n.a.	n.a.	23.5	45.1	42.1	25.9	23.4	2 000
June	n.a.	n.a.	n.a.	n.a.	16.6	32.8	32.0	20.3	17.5	1 418
June qtr	50	1 684	5 241	627	68.8	44.9	130.5	27.4	72.7	6 057
SERVICED APARTMENTS										
2000										
June qtr	25	876	3 317	437	45.5	57.1	98.1	32.5	40.2	4 724
2001										
April	n.a.	n.a.	n.a.	n.a.	16.1	61.0	36.8	38.1	15.8	1 815
May	n.a.	n.a.	n.a.	n.a.	12.8	47.0	25.1	25.1	11.1	1 419
June	n.a.	n.a.	n.a.	n.a.	10.6	40.2	23.7	24.5	10.6	1 164
June qtr	25	881	3 219	418	39.6	49.4	85.5	29.2	37.5	4 398
TOTAL ESTABLISHMENTS										
2000										
June qtr	131	5 496	16 607	3 921	248.5	49.7	441.6	29.2	232.0	21 702
2001										
April	n.a.	n.a.	n.a.	n.a.	92.1	56.1	172.8	34.9	91.5	9 050
May	n.a.	n.a.	n.a.	n.a.	77.0	45.3	129.9	25.4	68.8	7 280
June	n.a.	n.a.	n.a.	n.a.	58.3	35.5	105.7	21.3	54.9	5 425
June qtr	129	5 478	16 506	3 796	227.3	45.6	408.4	27.2	215.2	21 755

(a) Comprising establishments with 15 or more rooms or units. For explanation of terms and concepts refer to *Tourist Accommodation, Australia* (Cat. no. 8635.0).

(b) Takings from accommodation' after 1 July 2000 are recorded inclusive of GST. See Cat. no. 8635.0 or page 2 of this publication for more details.

Source: *Tourist Accommodation, Australia* (Cat. no. 8635.0). For more detailed information, see *Tourist Accommodation, Small Area Data, Tasmania* (Cat. no. 8635.6.40.001).

32

NATIONAL PARKS, PERSON ENTRIES(a)

Tasmanian National Park attendance

	<i>Cradle Mountain(b)</i> <i>(Lake Dove)</i>	<i>Lake St Clair(b)</i> <i>(Cynthia Bay)</i>	<i>Freycinet(b)</i>	<i>Mt Field(b)</i>	<i>Narawntapu(c)</i> <i>(Bakers Beach)</i>	<i>Mole Creek Karst(d)</i> <i>(Marakoopa Cave)</i>	<i>Maria Island(e)</i> <i>(Darlington)</i>
	<i>no.</i>	<i>no.</i>	<i>no.</i>	<i>no.</i>	<i>no.</i>	<i>no.</i>	<i>no.</i>
2000-01	186 000	111 800	273 000	138 700	34 300	26 788	12 820
2000							
October	11 400	6 900	15 100	9 200	2 600	1 798	740
November	15 000	9 400	21 700	11 000	3 600	2 454	1 224
December	21 200	11 700	32 500	15 200	5 100	3 910	1 397
2001							
January	32 000	20 400	53 900	23 200	6 000	4 203	2 456
February	20 300	15 000	36 100	15 600	3 800	2 277	1 610
March	22 900	15 700	30 800	15 000	3 500	2 397	1 691
April	22 400	11 500	24 700	15 400	2 600	2 635	1 418
May	8 900	6 100	11 500	7 200	1 500	1 102	519
June	7 200	3 300	9 300	5 600	1 400	1 394	477
July	8 700	3 000	8 500	5 500	1 600	948	96
August	5 000	2 200	8 900	7 000	1 000	1 132	241
September	10 300	5 200	r 12 800	6 900	1 900	2 324	843
October	p 12 500	7 700	20 800	8 600	n.y.a.	2 151	870

(a) A 'person entry' occurs whenever a visitor enters a National Park. Freycinet data, in particular, reflects repeat entries. Measurement occurs at the designated sites in brackets.

(b) Estimated through a combination of traffic and booth counts.

(c) Estimated through traffic counts.

(d) Number of people taken on a guided tour.

(e) The sum of ferry arrivals only. From July 2000, excludes estimated plane passengers.

Source: Tasmanian Parks and Wildlife Service, Department of Primary Industries, Water and Environment.

33

TRACKS IN NATIONAL PARKS, WALKER REGISTRATIONS(a)

	<i>Overland(b)</i>	<i>South Coast(c)</i>	<i>Freycinet(d)</i>	<i>Port Davey(c)</i>	<i>Frenchmans Cap</i>
	<i>no.</i>	<i>no.</i>	<i>no.</i>	<i>no.</i>	<i>no.</i>
2000-01	7 273	p 888	3 002	p 208	753
2000					
October	171	p 14	113	1	5
November	668	p 60	216	11	41
December	1 192	p 172	489	39	106
2001					
January	1 702	p 285	695	53	207
February	1 267	p 211	414	52	167
March	1 004	p 85	291	30	98
April	799	p 40	307	p 10	42
May	149	p 4	94	p 5	33
June	141	p 2	96	p 1	7
July	p 127	p 2	81	p 2	7
August	p 54	p 2	78	p 2	10
September	p 128	n.y.a.	164	p 2	16
October	p 211	n.y.a.	256	p 1	23

(a) Numbers include only walkers who registered and represented their intention.

(b) Sum of registrations at Cradle Mt and Lake St Clair.

(c) Sum of registrations to walk the length of the track in any direction, irrespective of starting point.

(d) All overnight walkers registered in the park.

Source: Tasmanian Parks and Wildlife Service, Department of Primary Industries, Water and Environment.

	<i>Passenger vehicles</i>	<i>Other vehicles(b)</i>	<i>Total (excl. motor cycles)</i>	<i>Vehicles registered by vehicle rental businesses(c)</i>	<i>Motor cycles</i>
	<i>no.</i>	<i>no.</i>	<i>no.</i>	<i>no.</i>	<i>no.</i>
1998-99	12 359	2 786	15 145	1 771	568
1999-2000	11 373	3 183	14 556	2 093	563
2000-01	12 603	2 768	15 371	2 040	720
2000					
September	1 313	232	1 545	454	49
October	1 028	213	1 241	213	47
November	1 191	245	1 436	173	82
December	1 827	208	2 035	884	77
2001					
January	826	213	1 039	9	96
February	793	203	996	6	40
March	965	230	1 195	7	68
April	732	193	925	2	40
May	886	288	1 174	2	56
June	813	295	1 108	—	48
July	1 041	247	1 288	132	52
August	1 042	217	1 259	186	41
September	984	153	1 137	395	60

(a) Includes State and Commonwealth Government owned motor vehicles other than those belonging to the defence services. Excludes tractors, plant and equipment, caravans and trailers.

(b) Comprises utilities, panel vans, rigid and articulated trucks and other truck type vehicles (i.e. motor vehicles designed for purposes other than freight carrying, e.g. campervans, tow trucks, ambulances and hearses) and buses.

(c) These figures are included in previous columns.

Source: ABS data available on request from datacube: 9303.0.55.001 New Motor Vehicle Registrations (NMVR), Australia, Main Data.

								<i>Trend</i>	
								<i>Total(d)</i>	
	Original	Food retailing	Clothing and soft good retailing	Household good retailing	Recreational good retailing	Hospitality and services	Change from corresponding month of previous year		
\$m	\$m	\$m	\$m	\$m	\$m	\$m	\$m	%	
1998-99	3 170.1	1 352.4	185.2	337.4	200.3	434.4	3 175.6	..	
1999-2000	3 278.5	1 398.0	163.3	366.4	211.0	475.1	3 254.4	..	
2000-01	3 405.8	1 480.2	173.1	409.7	211.7	483.2	3 414.1	..	
2000									
September	264.9	119.0	13.9	32.8	17.1	38.8	276.4	0.8	
October	274.7	120.7	14.1	32.9	17.2	38.8	278.6	1.7	
November	294.1	122.3	14.1	33.3	17.4	39.1	281.3	3.0	
December	372.5	123.7	14.1	33.9	17.7	39.5	284.3	4.5	
2001									
January	281.8	125.0	14.3	34.7	18.1	40.1	287.5	6.2	
February	265.5	126.1	14.6	35.3	18.4	40.8	290.2	7.6	
March	299.1	126.9	14.9	35.6	18.7	41.4	292.1	8.7	
April	281.3	127.5	15.3	35.5	17.4	41.9	292.7	9.1	
May	286.0	127.8	15.5	35.1	17.7	42.1	292.2	9.0	
June	276.5	127.9	15.6	34.5	17.9	41.9	291.1	8.3	
July	268.9	128.0	15.5	34.0	18.2	41.6	289.8	6.1	
August	279.2	128.0	15.4	33.6	18.4	41.3	288.6	5.1	
September	272.0	127.9	15.3	33.3	18.6	40.9	287.5	4.0	

(a) Excludes motor vehicles, parts, petrol, etc.

(b) ABS retail seasonally adjusted and trend estimates for earlier periods are revised each month. See Cat. no. 8501.0 for more details.

(c) Data from July 2000 reference month onwards are recorded inclusive of GST. See Cat. no. 8501.0 and page 2 of this publication for more details.

A break in the trend series occurred between June and July 2000 because of the impact of The New Tax System on Retail turnover.

(d) Includes Department stores and Other retailing.

Source: Retail Trade, Australia (Cat. no. 8501.0).

36

VALUE OF OVERSEAS TRADE(a), TASMANIA AND AUSTRALIA

	Tasmania				Australia			
	Imports	Imports change over preceding period	Exports	Exports change over preceding period	Imports	Imports change over preceding period	Exports(b)	Exports change over preceding period
	\$m	%	\$m	%	\$m	%	\$m	%
1998-99	407	6	2 019	-5	97 611	8	85 991	-2
1999-2000	440	8	2 215	10	110 078	13	97 286	13
2000-01	524	19	r 2 436	10	r 118 252	7	119 555	23
2000								
September	34	-40	167	-8	9 852	-8	9 779	4
October	37	12	198	18	11 154	13	10 551	8
November	59	58	283	43	11 006	-1	10 431	-1
December	55	-7	221	-22	9 250	-16	10 294	-1
2001								
January	45	-18	193	-13	9 230	—	8 327	-19
February	30	-33	173	-10	8 322	-10	9 223	11
March	48	60	213	23	r 9 930	19	r 10 571	15
April	28	-42	212	—	9 574	-4	r 10 302	-3
May	51	82	223	5	r 9 984	4	r 10 700	4
June	34	-33	r 206	-8	9 477	-5	r 10 637	r -1
July	36	7	201	-2	r 9 646	2	r 10 588	r —
August	46	r 27	r 190	r -5	r 10 537	9	r 10 519	r -1
September	37	-21	166	-13	9 545	-9	10 644	1

(a) It is difficult to get a complete picture of Tasmania's trade performance as imports recorded by the ABS include only goods imported directly into the State from overseas, and reported by the Australian Customs Service. Many of Tasmania's goods imported for direct consumption, or input into further processing industries, arrive via interstate ports, and are not included in this table.

(b) Includes re-exports.

Source: *International Trade*.

37

MERCHANDISE EXPORTS, BY COUNTRY—ORIGINAL

	European Community				East Asia				Total all countries
	United States of America	United Kingdom	Total European Community	Japan	Korea	Taiwan	Hong Kong	ASEAN(a)	
	\$'000	\$'000	\$'000	\$'000	\$'000	\$'000	\$'000	\$'000	
1998-99	235 787	28 691	278 037	466 626	101 177	150 071	152 533	353 441	2 019 182
1999-2000	202 831	19 228	309 082	489 037	133 553	207 233	201 348	383 690	2 214 523
2000-01	r 229 832	37 167	r 154 041	r 573 314	r 183 972	213 997	252 793	r 390 562	r 2 435 953
2000									
September	12 901	4 163	10 151	30 647	11 893	22 416	25 542	37 853	167 042
October	24 633	1 498	19 191	45 135	16 749	15 747	9 390	33 927	197 837
November	13 016	7 233	12 979	44 258	17 667	24 775	21 497	36 863	283 376
December	10 652	4 172	12 741	70 650	18 139	14 879	26 852	31 898	220 859
2001									
January	19 727	1 218	9 265	45 884	10 662	21 125	28 183	27 181	193 153
February	19 243	2 303	17 187	42 863	14 478	10 273	16 153	29 667	172 898
March	22 422	1 327	19 267	36 229	12 575	20 600	25 974	r 36 074	r 212 987
April	19 556	2 988	r 19 205	48 618	r 22 197	19 678	19 813	r 36 723	r 212 497
May	28 937	3 672	8 203	r 44 978	14 532	25 388	23 868	r 35 534	r 222 737
June	r 22 157	2 246	10 647	77 937	18 071	11 341	14 221	r 20 019	r 205 505
July	38 008	3 579	6 536	40 356	8 414	12 907	21 324	34 310	200 697
August	r 25 968	r 3 107	r 9 253	r 52 121	r 12 354	r 14 971	r 24 080	r 31 657	r 190 189
September	19 710	303	10 074	35 592	13 187	11 581	19 980	26 929	165 743

(a) ASEAN member countries are: Brunei, Indonesia, Laos, Malaysia, Myanmar, Philippines, Singapore, Thailand and Vietnam.

Source: *International Trade*.

	<i>Meat and meat preparations</i>	<i>Dairy products</i>	<i>Fish, crustaceans and molluscs</i>	<i>Vegetables and fruit</i>	<i>Wood and woodchips(a)</i>	<i>Textile fibres and wastes</i>	<i>Metallic ores and metal scrap</i>
	\$'000	\$'000	\$'000	\$'000	\$'000	\$'000	\$'000
1998-99	65 026	102 709	136 268	54 907	296 164	24 999	278 001
1999-2000	88 298	64 573	145 484	44 689	303 340	22 358	242 584
2000-01	r 88 773	101 006	176 737	r 49 648	31 816	21 248	r 243 055
2000							
September	4 155	6 875	16 804	1 434	2 665	2 927	10 291
October	5 197	10 689	11 322	969	2 567	2 834	25 250
November	7 524	10 720	16 754	369	481	2 092	14 008
December	8 148	10 536	21 261	621	4 912	3 258	33 759
2001							
January	9 339	8 678	17 464	924	2 295	1 423	12 692
February	9 101	10 076	12 292	2 850	196	722	16 369
March	8 060	8 427	17 168	7 404	4 902	5 764	r 20 089
April	7 573	6 069	9 736	r 15 171	2 114	70	18 218
May	9 299	8 684	11 835	r 8 703	2 450	131	r 25 589
June	r 8 240	7 336	10 439	3 479	1 877	131	r 33 085
July	8 153	10 429	13 218	r 3 069	3 177	977	18 393
August	r 6 582	r 11 563	r 21 282	r 3 147	r 2 416	935	r 9 284
September	5 433	5 488	13 652	783	2 315	1 166	10 692
	<i>Medical and pharmaceutical products</i>	<i>Paper and paperboard</i>	<i>Iron and steel</i>	<i>Non-ferrous metals</i>	<i>Road vehicles and transport equipment</i>	<i>Other and combined confidential items</i>	<i>Total all commodity groups</i>
	\$'000	\$'000	\$'000	\$'000	\$'000	\$'000	\$'000
1998-99	52 330	4 130	95 265	544 311	173 015	192 057	2 019 182
1999-2000	67 353	9 932	10 216	681 903	213 836	319 958	2 214 523
2000-01	110 346	3 444	4 209	793 286	107 374	r 705 011	r 2 435 953
2000							
September	7 097	364	386	62 659	397	50 989	167 042
October	10 686	228	161	61 648	1 017	65 269	197 837
November	12 732	310	366	74 040	89 077	54 904	283 376
December	3 576	58	530	74 769	4 585	54 847	220 859
2001							
January	8 551	145	275	71 708	1 514	58 146	193 153
February	9 434	73	429	65 707	2 046	43 603	172 898
March	15 862	634	259	66 722	2 256	55 441	r 212 987
April	5 202	180	499	72 898	3 146	71 662	r 212 497
May	8 078	89	338	78 422	701	68 418	r 222 737
June	10 571	393	273	55 548	2 248	r 71 884	r 205 505
July	7 352	110	338	77 267	90	58 125	200 697
August	7 580	r 364	182	r 73 535	r 1 563	r 51 755	r 190 189
September	9 536	223	527	63 324	653	51 952	165 743

(a) Hardwood woodchips exports are confidential for Tasmania from June 2000.

Source: *International Trade*.

	NSW	Vic.	Qld	SA	WA	Tas.	Aust.(a)
Population							
Estimated resident population, March 2001 ('000) p	6 516.6	4 816.1	3 612.3	1 501.4	1 904.1	470.3	19 334.2
Proportion of Australian population, March 2001 (%) p	33.7	24.9	18.7	7.8	9.8	2.4	100.0
Population growth rate, 12 months to March 2001(%) p	1.1	1.3	1.7	0.3	1.4	-0.1	1.2
Labour force							
Employment growth, 12 months to October 2001 (trend series) (%)							
Males	0.4	0.5	0.8	-1.9	0.8	-2.3	0.3
Females	0.5	1.2	1.8	1.5	0.1	-0.1	1.0
Persons	0.4	0.8	1.3	-0.4	0.4	-1.3	0.6
Unemployment rate (trend series), October 2001 (%)	6.4	6.5	8.0	7.3	6.9	9.2	6.9
Unemployment growth, 12 months to October 2001 (trend series) (%)	20.4	13.6	9.9	1.0	19.8	4.1	14.2
Participation rate (trend series), October 2001 (%)	62.7	63.8	64.9	60.2	66.4	58.7	63.7
Job vacancy rate, August 2001 (%)	1.1	1.4	1.1	1.2	1.4	0.7	1.2
Working days lost through industrial disputes, 12 months to August 2001 (days per '000 employees)	60	62	42	26	31	4	49
Wages and prices							
Average weekly full-time adult employees' total earnings (trend series) August 2001 (\$)							
Males	1005.30	901.10	867.60	880.60	954.80	825.70	935.80
Females	793.30	762.30	725.30	729.60	725.20	723.90	763.40
Persons	926.60	851.10	817.50	828.20	875.20	791.40	873.40
Average weekly full-time adult employees' total earnings, growth (trend), 12 months to Aug '01 (%)	6.1	4.8	4.9	4.9	3.2	2.7	4.9
Consumer price index, all groups, annual growth to September qtr 2001 (%) (b)	2.9	2.5	2.2	2.3	2.3	1.1	2.5
Building							
% change in the number of total dwelling units approved (original),							
— in the 12 months ended September 2001, over the same period previous year	-14.1	-11.8	-18.2	-14.8	-17.5	-23.5	-15.0
—September 2000 to September 2001	60.6	65.8	41.4	111.0	31.4	59.7	54.8

For footnotes see end of table.

...continued

	NSW	Vic.	Qld	SA	WA	Tas.	Aust.(a)
Private investment and retail trade							
% change in private new capital expenditure, 12 months ended June 2001, over the same period previous year (original)	-5.7	-7.2	-18.2	8.3	-5.3	13.2	-7.0
% change in trend estimates turnover of retail establishments, September 2001 (change from corresponding month of the previous year)	6.8	11.9	6.4	11.5	6.2	4.0	8.3
Transport							
% change in number of new motor vehicles (excluding motorcycles) registered in the 12 months ended September 2001, over the same period previous year	-3.2	5.6	7.6	5.5	-1.0	0.9	1.9
Agriculture							
% change in the number of livestock slaughtered 12 months ended September 2001 over the same period previous year (original)							
Cattle and calves	-1.1	-5.9	5.5	-0.3	2.8	-11.0	0.3
Sheep and lambs	4.6	3.6	3.9	1.1	-16.3	-25.0	-0.7
Tourism — room occupancy rates							
Hotels, motels & guest houses, & serviced apartments with facilities, June quarter 2001 (%)	54.1	55.1	57.2	54.1	52.1	45.6	55.2
Australian National and State Accounts							
% change in Domestic (State) Final Demand(c), Chain Volume measures (trend series)							
Mar qtr 2001 to June qtr 2001	-0.2	1.2	1.6	0.6	1.5	0.8	0.7
June qtr 2000 to June qtr 2001	-2.5	1.5	2.9	1.1	2.7	1.8	0.3

(a) Australian totals include the ACT and NT, with the exception of Agriculture, which excludes both.

(b) CPI applies to State capitals.

(c) Total of four types of expenditure: Private investment, Private consumption, Government investment, Government consumption.

	<i>Unit</i>	<i>Greater Hobart and Southern Statistical Divisions</i>	<i>Northern Statistical Division</i>	<i>Mersey-Lyell Statistical Division</i>	<i>Tasmania</i>
Area(a)	km ²	25 616	19 980	22 523	68 121
Population					
Estimated resident population, 30 June 1996	no.	230 187	134 047	110 209	474 443
Estimated resident population, 30 June 2000	no.	229 060	133 080	108 236	470 376
Births 1999(b)	no.	2 937	1 717	1 345	6 032
Deaths 1999(b)	no.	1 823	1 111	834	3 783
Labour force (original), October 2001					
Total employed	no.	94 700	60 700	43 600	199 100
Total unemployed	no.	9 100	4 800	4 800	18 700
Unemployment rate	%	8.8	7.3	9.9	8.6
Participation rate	%	57.7	59.9	57.9	58.4
Schools, 2000(c)					
Government	no.	99	58	58	215
Non-government	no.	34	17	16	67
Full-time equivalent School students, 2000(c)					
Government					
Males	no.	15 415.8	9395.0	7 805.3	32 616.1
Females	no.	14 865.6	9 492.4	7 597.5	31 955.5
Total	no.	30 281.4	18 887.4	15 402.8	64 571.6
Non-government					
Males	no.	5 825.2	2 479.1	2 022.2	10 326.5
Females	no.	6 132.9	2 423.5	1 919.2	10 475.6
Total	no.	11 958.1	4 902.6	3 941.4	20 802.1
Educational qualification, 1996 Census(d)					
Bachelor degree or higher(e)	no.	17 058	7 152	3 908	28 184
Undergraduate diploma	no.	5 893	3 268	2 181	11 374
Associate diploma	no.	3 773	1 902	1 466	7 184
Skilled vocational	no.	16 255	10 040	8 841	35 238
Basic vocational	no.	4 548	2 632	2 305	9 515
Agriculture					
Establishments with agricultural activity, 1999–2000 season	no.	1 123	1 597	1 710	4 430
Total area of establishments	ha.	648 148	835 793	309 599	1 793 540
Crops, production, 1999–2000 season					
Potatoes	tonnes	4 197	103 197	159 778	267 172
Onions	tonnes	—	18 350	44 365	62 716
Apples	tonnes	44 900	4 592	8 044	57 537
Barley	tonnes	5 443	15 362	1 376	22 181
Livestock, 1999–2000 season					
Meat cattle	no.	49 738	162 071	198 800	410 610
Milk cattle	no.	5 053	80 396	120 552	206 000
Sheep and lambs	no.	1 351 885	1 807 545	181 248	3 340 678
Pigs	no.	1 761	11 360	4 427	17 548
Gross value of agricultural production, 1998–99	\$m	147	249	305	700

For footnotes see end of table.

...continued

	<i>Unit</i>	<i>Greater Hobart and Southern Statistical Divisions</i>	<i>Northern Statistical Division</i>	<i>Mersey-Lyell Statistical Division</i>	<i>Tasmania</i>
Building, 2000–2001					
Total dwelling units approved	no.	632	346	218	1 196
Value of total residential building approved	\$'000	91 130	47 635	31 978	170 742
Value of total building approved	\$'000	173 164	93 717	56 423	323 304
Dwellings, Census 1996					
Total dwellings	no.	98 815	57 467	45 529	201 820
Occupied private dwellings	no.	85 255	49 759	40 183	175 197
Fully owned	no.	34 338	21 563	18 359	74 260

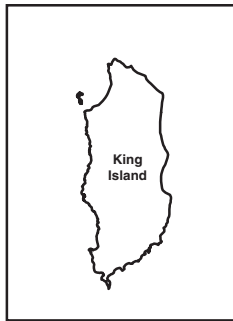
(a) Source: Department of Primary Industries, Water and Environment.

(b) Births and deaths are based on usual residence year of registration. Total Tasmania includes usual residence other than Tasmanian Statistical Divisions.

(c) Source: DETYA and Tasmanian Department of Education.

(d) Total includes migratory statistical division.

(e) Includes higher degree, postgraduate diploma and bachelor degree.



Statistical Divisions

Statistical Division NORTHERN

Local Government Area Dorset



Based on ASGC 1996
Prepared by: Demography Section, ABS Hobart
© Commonwealth of Australia, 1998

FOR MORE INFORMATION...

- INTERNET* **www.abs.gov.au** the ABS web site is the best place to start for access to summary data from our latest publications, information about the ABS, advice about upcoming releases, our catalogue, and Australia Now—a statistical profile.
- LIBRARY* A range of ABS publications is available from public and tertiary libraries Australia-wide. Contact your nearest library to determine whether it has the ABS statistics you require, or visit our web site for a list of libraries.
- CPI INFOLINE* For current and historical Consumer Price Index data, call 1902 981 074 (call cost 77c per minute).
- DIAL-A-STATISTIC* For the latest figures for National Accounts, Balance of Payments, Labour Force, Average Weekly Earnings, Estimated Resident Population and the Consumer Price Index call 1900 986 400 (call cost 77c per minute).

INFORMATION SERVICE

Data which have been published and can be provided within five minutes are free of charge. Our information consultants can also help you to access the full range of ABS information—ABS user-pays services can be tailored to your needs, time frame and budget. Publications may be purchased. Specialists are on hand to help you with analytical or methodological advice.

- PHONE* **1300 135 070**
- EMAIL* **client.services@abs.gov.au**
- FAX* 1300 135 211
- POST* Client Services, ABS, GPO Box 796, Sydney 1041

WHY NOT SUBSCRIBE?

ABS subscription services provide regular, convenient and prompt deliveries of ABS publications and products as they are released. Email delivery of monthly and quarterly publications is available.

- PHONE* 1300 366 323
- EMAIL* subscriptions@abs.gov.au
- FAX* 03 9615 7848
- POST* Subscription Services, ABS, GPO Box 2796Y, Melbourne 3001



2130360012011
ISSN 1034-1803

RRP \$20.00